

For Research Use Only

# CCNL1 Polyclonal antibody

Catalog Number: 13138-1-AP



## Basic Information

<b>Catalog Number:</b> 13138-1-AP	<b>GenBank Accession Number:</b> BC007081	<b>Purification Method:</b> Antigen affinity purification
<b>Size:</b> 450 µg/ml	<b>GeneID (NCBI):</b> 57018	<b>Recommended Dilutions:</b> WB 1:500-1:1000
<b>Source:</b> Rabbit	<b>UNIPROT ID:</b> Q9UK58	
<b>Isotype:</b> IgG	<b>Full Name:</b> cyclin L1	
<b>Immunogen Catalog Number:</b> AG3731	<b>Calculated MW:</b> 526 aa, 60 kDa	
	<b>Observed MW:</b> 46 kDa	

## Applications

<b>Tested Applications:</b> WB, ELISA	<b>Positive Controls:</b> WB : COLO 320 cells, PC-3 cells, MCF-7 cells
<b>Species Specificity:</b> human, mouse, rat	

## Background Information

CCNL1, also named as Cyclin-L1, contains a RS region and belongs to the cyclin family. CCNL1 localizes in the nucleus speckle and is Overexpressed in primary tumors of head and neck squamous cell carcinomas (HNSCC). CCNL1 as transcriptional regulator participates in regulating the pre-mRNA splicing process. It seems to be involved in the regulation of RNA polymerase II (pol II). CCNL1 functions in association with cyclin-dependent kinases (CDKs) and has a role in the second step of splicing. It may be a candidate proto-oncogene in head and neck squamous cell carcinomas (HNSCC). The calculated molecular weight of CCNL1 is about 55-60 kDa, but we detected a 40-50 kDa isoform by western blotting.

## Storage

**Storage:**  
Store at -20°C. Stable for one year after shipment.  
**Storage Buffer:**  
PBS with 0.02% sodium azide and 50% glycerol pH 7.3.  
Aliquoting is unnecessary for -20°C storage

For technical support and original validation data for this product please contact:

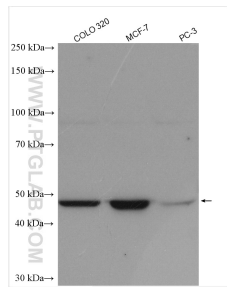
T: 4006900926

E: [Proteintech-CN@ptglab.com](mailto:Proteintech-CN@ptglab.com)

W: [ptgcn.com](http://ptgcn.com)

**This product is exclusively available under Proteintech Group brand and is not available to purchase from any other manufacturer.**

## Selected Validation Data



Various lysates were subjected to SDS PAGE followed by western blot with 13138-1-AP (CCNL1 antibody) at dilution of 1:800 incubated at room temperature for 1.5 hours.