

For Research Use Only

# TSEN2 Polyclonal antibody

Catalog Number: 13103-2-AP

Featured Product

3 Publications



## Basic Information

Catalog Number:

13103-2-AP

Size:

700 µg/ml

Source:

Rabbit

Isotype:

IgG

Immunogen Catalog Number:

AG3742

GenBank Accession Number:

BC019582

GeneID (NCBI):

80746

UNIPROT ID:

Q8NCEO

Full Name:

tRNA splicing endonuclease 2  
homolog (S. cerevisiae)

Calculated MW:

465 aa, 51 kDa

Observed MW:

51 kDa

Purification Method:

Antigen affinity purification

Recommended Dilutions:

WB 1:500-1:2000

IF/ICC 1:50-1:500

## Applications

Tested Applications:

WB, IF/ICC, ELISA

Cited Applications:

WB

Species Specificity:

human, mouse

Cited Species:

human

Positive Controls:

WB : mouse colon tissue, human brain tissue, mouse  
brain tissue

IF/ICC : HeLa cells,

## Background Information

TSEN2, also named as SEN2, belongs to the tRNA-intron endonuclease family. TSEN2 is a metal ion independent nuclease that cleave the 5' splice site (PMID: 32476018). TSEN2 has 5 isoforms with the molecular mass of 45-53 kDa. TSEN2 is involved in the formation of a human endonuclease complex whose function is the removal of introns from pre-tRNA (PMID: 16595010).

## Notable Publications

Author	Pubmed ID	Journal	Application
Martin W Breuss	27392077	Am J Hum Genet	WB
Ashleigh E Schaffer	24766810	Cell	WB
Jennifer E Hurtig	36943791	Genetics	WB

## Storage

Storage:

Store at -20°C. Stable for one year after shipment.

Storage Buffer:

PBS with 0.02% sodium azide and 50% glycerol pH 7.3.

Aliquoting is unnecessary for -20°C storage

For technical support and original validation data for this product please contact:

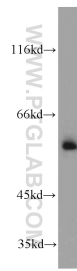
T: 4006900926

E: Proteintech-CN@ptglab.com

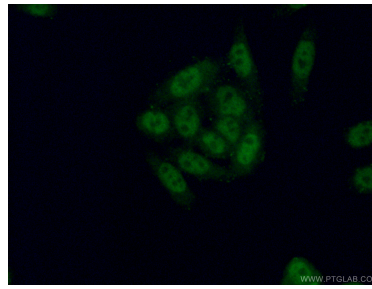
W: ptgcn.com

This product is exclusively available under Proteintech Group brand and is not available to purchase from any other manufacturer.

## Selected Validation Data



mouse colon tissue were subjected to SDS PAGE followed by western blot with 13103-2-AP (TSEN2 antibody) at dilution of 1:1000 incubated at room temperature for 1.5 hours.



Immunofluorescent analysis of (4% PFA) fixed HeLa cells using 13103-2-AP (TSEN2 antibody) at dilution of 1:50 and Alexa Fluor 488-conjugated AffiniPure Goat Anti-Rabbit IgG(H+L).