

For Research Use Only

MLF1 Polyclonal antibody, PBS Only

Catalog Number: 13100-1-PBS



Basic Information

Catalog Number:

13100-1-PBS

Size:

1 mg/ml

Source:

Rabbit

Isotype:

IgG

Immunogen Catalog Number:

AG3727

GenBank Accession Number:

BC007045

GeneID (NCBI):

4291

UNIPROT ID:

P58340

Full Name:

myeloid leukemia factor 1

Calculated MW:

268 aa, 31 kDa

Observed MW:

31 kDa

Purification Method:

Antigen affinity purification

Applications

Tested Applications:

WB, IHC, IP, Indirect ELISA

Species Specificity:

human, mouse

Background Information

Storage

Storage:

Store at -80°C.

The product is shipped with ice packs. Upon receipt, store it immediately at -80°C

Storage Buffer:

PBS Only

For technical support and original validation data for this product please contact:

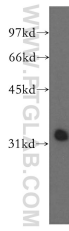
T: 4006900926

E: Proteintech-CN@ptglab.com

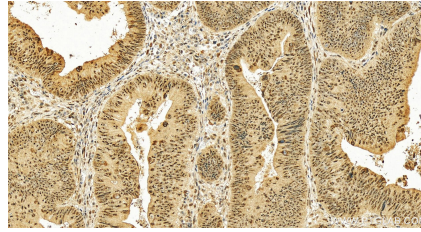
W: ptgcn.com

This product is exclusively available under Proteintech Group brand and is not available to purchase from any other manufacturer.

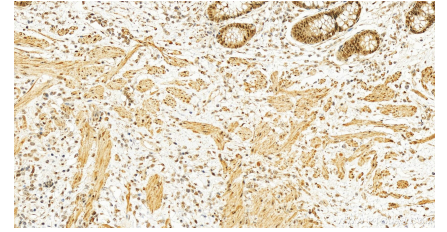
Selected Validation Data



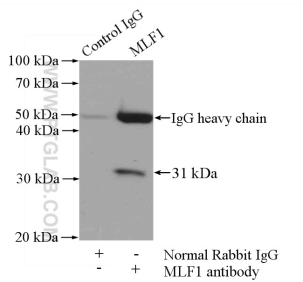
mouse heart tissue were subjected to SDS PAGE followed by western blot with 13100-1-AP (MLF1 antibody) at dilution of 1:500 incubated at room temperature for 1.5 hours. This data was developed using the same antibody clone with 13100-1-PBS in a different storage buffer formulation.



Immunohistochemical analysis of paraffin-embedded human colon cancer tissue slide using 13100-1-AP (MLF1 antibody) at dilution of 1:200 (under 20x lens). Heat mediated antigen retrieval with Tris-EDTA buffer (pH 9.0). This data was developed using the same antibody clone with 13100-1-PBS in a different storage buffer formulation.



Immunohistochemical analysis of paraffin-embedded human colon cancer tissue slide using 13100-1-AP (MLF1 antibody) at dilution of 1:200 (under 20x lens). Heat mediated antigen retrieval with Tris-EDTA buffer (pH 9.0). This data was developed using the same antibody clone with 13100-1-PBS in a different storage buffer formulation.



IP result of anti-MLF1 (IP:13100-1-AP, 4ug; Detection:13100-1-AP 1:500) with mouse heart tissue lysate 4000ug. This data was developed using the same antibody clone with 13100-1-PBS in a different storage buffer formulation.