

For Research Use Only

MLF1 Polyclonal antibody

Catalog Number: 13100-1-AP

1 Publications



Basic Information

Catalog Number:

13100-1-AP

Size:

700 ug/ml

Source:

Rabbit

Isotype:

IgG

Immunogen Catalog Number:

AG3727

GenBank Accession Number:

BC007045

GeneID (NCBI):

4291

UNIPROT ID:

P58340

Full Name:

myeloid leukemia factor 1

Calculated MW:

268 aa, 31 kDa

Observed MW:

31 kDa

Purification Method:

Antigen affinity purification

Recommended Dilutions:

WB 1:500-1:2000

IP 0.5-4.0 ug for 1.0-3.0 mg of total protein lysate

IHC 1:50-1:500

Applications

Tested Applications:

WB, IHC, IP, ELISA

Cited Applications:

WB

Species Specificity:

human, mouse

Cited Species:

human

Note-IHC: suggested antigen retrieval with TE buffer pH 9.0; (*) Alternatively, antigen retrieval may be performed with citrate buffer pH 6.0

Positive Controls:

WB : mouse heart tissue, human brain tissue, mouse testis tissue

IP : mouse heart tissue,

IHC : human colon cancer tissue,

Background Information

Notable Publications

Author	Pubmed ID	Journal	Application
Daoyuan Huang	32703400	Biochem Biophys Res Commun	WB

Storage

Storage:

Store at -20°C. Stable for one year after shipment.

Storage Buffer:

PBS with 0.02% sodium azide and 50% glycerol pH 7.3.

Aliquoting is unnecessary for -20°C storage

For technical support and original validation data for this product please contact:

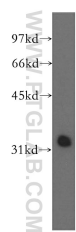
T: 4006900926

E: Proteintech-CN@ptglab.com

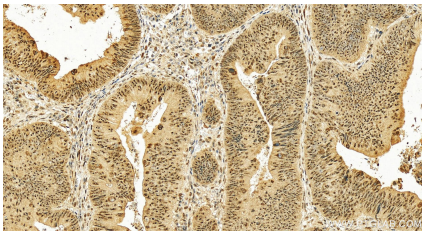
W: ptgcn.com

This product is exclusively available under Proteintech Group brand and is not available to purchase from any other manufacturer.

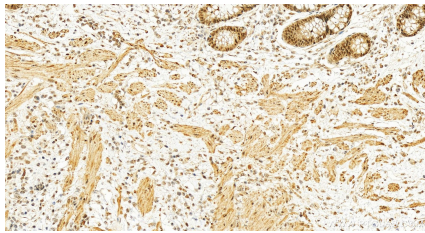
Selected Validation Data



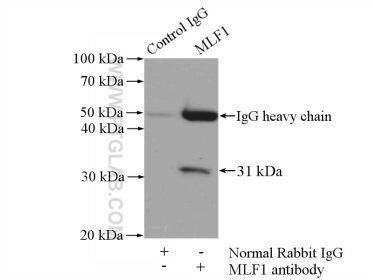
mouse heart tissue were subjected to SDS PAGE followed by western blot with 13100-1-AP (MLF1 antibody) at dilution of 1:500 incubated at room temperature for 1.5 hours.



Immunohistochemical analysis of paraffin-embedded human colon cancer tissue slide using 13100-1-AP (MLF1 antibody) at dilution of 1:200 (under 20x lens). Heat mediated antigen retrieval with Tris-EDTA buffer (pH 9.0).



Immunohistochemical analysis of paraffin-embedded human colon cancer tissue slide using 13100-1-AP (MLF1 antibody) at dilution of 1:200 (under 20x lens). Heat mediated antigen retrieval with Tris-EDTA buffer (pH 9.0).



IP result of anti-MLF1 (IP:13100-1-AP, 4ug; Detection:13100-1-AP 1:500) with mouse heart tissue lysate 4000ug.