

For Research Use Only

# ADRB2 Polyclonal antibody

Catalog Number: 13096-1-AP

Featured Product

17 Publications



## Basic Information

Catalog Number:

13096-1-AP

Size:

380 µg/ml

Source:

Rabbit

Isotype:

IgG

Immunogen Catalog Number:

AG3715

GenBank Accession Number:

BC012481

GeneID (NCBI):

154

UNIPROT ID:

P07550

Full Name:

adrenergic, beta-2-, receptor, surface

Calculated MW:

46 kDa

Observed MW:

50-55 kDa

Purification Method:

Antigen affinity purification

Recommended Dilutions:

WB 1:500-1:2000

IHC 1:50-1:200

## Applications

Tested Applications:

WB, IHC, ELISA

Cited Applications:

WB, IHC, IF

Species Specificity:

human, mouse, rat

Cited Species:

human, mouse, rat

**Note-IHC: suggested antigen retrieval with TE buffer pH 9.0; (\*) Alternatively, antigen retrieval may be performed with citrate buffer pH 6.0**

Positive Controls:

WB : mouse heart tissue, rat heart tissue

IHC : human heart tissue,

## Background Information

Beta-2 adrenergic receptor (ADRB2), a member of the G protein-coupled receptor (GPCR) family, binds epinephrine with an approximately 30-fold greater affinity than it does norepinephrine. ADRB2 is directly linked to one of its final effectors, the class C L-type Ca<sup>2+</sup> channel, Cav1.2 (PMID: 11441182). This receptor-channel complex also contains a G protein, an adenylyl cyclase, cyclic adenosine monophosphate-dependent protein kinase (PKA), and a counteracting phosphatase, PP2A. Different polymorphic forms, point mutations, and/or downregulation of the gene of ADRB2 are associated with nocturnal asthma, obesity and type 2 diabetes. This antibody detects ADRB2 with an apparent molecular weight of 50-55 kDa as has been shown by some researches (PMID: 25348166; 12502786; 29232706; 23984976; 19584355).

## Notable Publications

Author	Pubmed ID	Journal	Application
Wei-Jun Wei	27432558	Oncol Rep	WB
M Ribeiro-da-Silva	30375409	Sci Rep	IF
Filipa Amaro	33120955	Int J Mol Sci	WB,IF

## Storage

Storage:

Store at -20°C. Stable for one year after shipment.

Storage Buffer:

PBS with 0.02% sodium azide and 50% glycerol pH 7.3.

Aliquoting is unnecessary for -20°C storage

For technical support and original validation data for this product please contact:

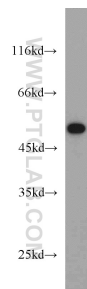
T: 4006900926

E: [Proteintech-CN@ptglab.com](mailto:Proteintech-CN@ptglab.com)

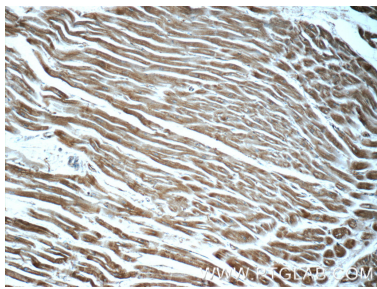
W: [ptgcn.com](http://ptgcn.com)

**This product is exclusively available under Proteintech Group brand and is not available to purchase from any other manufacturer.**

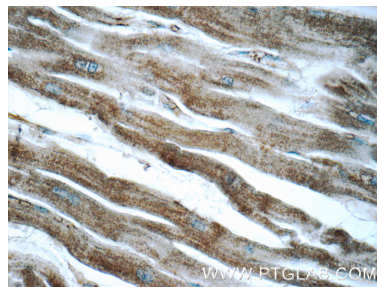
## Selected Validation Data



mouse heart tissue were subjected to SDS PAGE followed by western blot with 13096-1-AP (ADRB2 antibody) at dilution of 1:1000 incubated at room temperature for 1.5 hours.



Immunohistochemical analysis of paraffin-embedded human heart tissue slide using 13096-1-AP (ADRB2 Antibody) at dilution of 1:50 (under 10x lens).



Immunohistochemical analysis of paraffin-embedded human heart tissue slide using 13096-1-AP (ADRB2 Antibody) at dilution of 1:50 (under 40x lens).