

For Research Use Only

MITF Polyclonal antibody

Catalog Number: 13092-1-AP **29 Publications**



Basic Information

Catalog Number:

13092-1-AP

Size:

700 µg/ml

Source:

Rabbit

Isotype:

IgG

Immunogen Catalog Number:

AG3679

GenBank Accession Number:

BC012503

GeneID (NCBI):

4286

UNIPROT ID:

O75030

Full Name:

microphthalmia-associated transcription factor

Calculated MW:

91 aa, 10 kDa, 59 kDa

Observed MW:

59-65 kDa

Purification Method:

Antigen affinity purification

Recommended Dilutions:

WB 1:500-1:3000

IP 0.5-4.0 µg for 1.0-3.0 mg of total protein lysate

FC 1:20-1:200

Applications

Tested Applications:

FC, IP, WB, ELISA

Cited Applications:

WB, IF

Species Specificity:

human, mouse, rat

Cited Species:

human, rat, mouse

Positive Controls:

WB: A549 cells, Jurkat cells, mouse heart tissue, rat skin tissue, NIH/3T3 cells

IP: mouse heart tissue,

FC: hESC cells,

Background Information

The retinal pigment epithelium (RPE) has an essential role in maintaining visual function and dedifferentiation of RPE contributes to the pathophysiology of several ocular diseases [PMID: 22523078]. Microphthalmia-associated transcription factor (MITF) is a key regulator of RPE differentiation that is also down-regulated in dedifferentiated hRPE cells. MITF is a basic helix-loop-helix (hHLH)-leucine zipper protein that involves in the development of various cell types, including neural crest-derived melanocytes and optic cup-derived retinal pigment epithelial cells [PMID: 10578055].

Notable Publications

Author	Pubmed ID	Journal	Application
Kaushal Asrani	31527310	J Clin Invest	WB
Bohee Jang	34650007	Mol Cells	WB
Haibin Tian	36185374	iScience	IF

Storage

Storage:

Store at -20°C. Stable for one year after shipment.

Storage Buffer:

PBS with 0.02% sodium azide and 50% glycerol pH 7.3.

Aliquoting is unnecessary for -20°C storage

For technical support and original validation data for this product please contact:

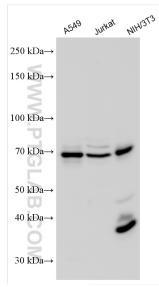
T: 4006900926

E: Proteintech-CN@ptglab.com

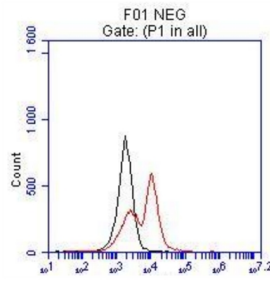
W: ptgcn.com

This product is exclusively available under Proteintech Group brand and is not available to purchase from any other manufacturer.

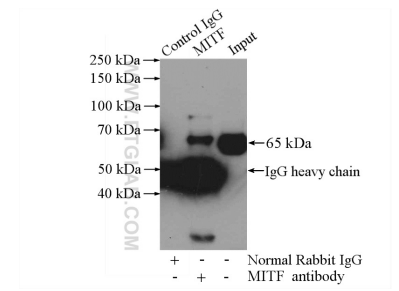
Selected Validation Data



Various lysates were subjected to SDS PAGE followed by western blot with 13092-1-AP (MITF antibody) at dilution of 1:1500 incubated at room temperature for 1.5 hours.



FC result of anti-MITF (13092-1-AP, 1:50) with hESC which spontaneous differentiation toward retinal lineage (RPE). (Black: control; Red MITF).



IP result of anti-MITF (IP:13092-1-AP, 4ug; Detection:13092-1-AP 1:1000) with mouse heart tissue lysate 4000ug.