

For Research Use Only

TRX2/TXN2 Polyclonal antibody

Catalog Number: 13089-1-AP

Featured Product

30 Publications



Basic Information

Catalog Number:

13089-1-AP

Size:

400 ug/ml

Source:

Rabbit

Isotype:

IgG

Immunogen Catalog Number:

AG3640

GenBank Accession Number:

BC013726

GeneID (NCBI):

25828

UNIPROT ID:

Q99757

Full Name:

thioredoxin 2

Calculated MW:

166 aa, 18 kDa

Observed MW:

12 kDa

Purification Method:

Antigen affinity purification

Recommended Dilutions:

WB 1:500-1:2000

IHC 1:20-1:200

Applications

Tested Applications:

WB, IHC, ELISA

Cited Applications:

WB, IHC, IF

Species Specificity:

human

Cited Species:

human, mouse, rat

Note-IHC: suggested antigen retrieval with TE buffer pH 9.0; (*) Alternatively, antigen retrieval may be performed with citrate buffer pH 6.0

Positive Controls:

WB : Raji cells, human liver tissue

IHC : human pancreas cancer tissue,

Background Information

TXN2 (Thioredoxin-2) is also named as TRX2, MTRX, Mt-TRX and regulates the mitochondrial redox state and plays an important role in cell proliferation. It has been shown that cells conditionally deficient in Trx2 undergo apoptosis in the absence of exogenous stress, accompanied by an accumulation of intracellular ROS, the activation of caspase 9 and caspase 3, and the release of cytochrome c into the cytosol. In the retina, the expression profile and the role of Trx2 have not yet been defined (PMID: 18441302).

Notable Publications

Author	Pubmed ID	Journal	Application
Kun-Yi Li	32920833	J Neurochem	WB,IF
Ester Aso	27567873	J Alzheimers Dis	WB
Lisa Arodin	24270206	J Alzheimers Dis	

Storage

Storage:

Store at -20°C. Stable for one year after shipment.

Storage Buffer:

PBS with 0.02% sodium azide and 50% glycerol pH 7.3.

Aliquoting is unnecessary for -20°C storage

For technical support and original validation data for this product please contact:

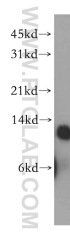
T: 4006900926

E: Proteintech-CN@ptglab.com

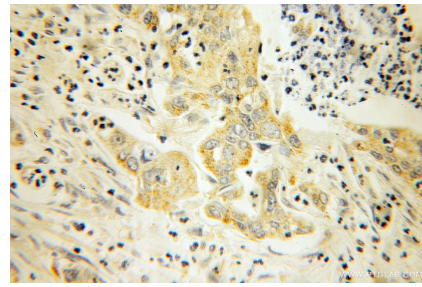
W: ptgcn.com

This product is exclusively available under Proteintech Group brand and is not available to purchase from any other manufacturer.

Selected Validation Data



Raji cells were subjected to SDS PAGE followed by western blot with 13089-1-AP (TRX2 antibody) at dilution of 1:500 incubated at room temperature for 1.5 hours.



Immunohistochemical analysis of paraffin-embedded human pancreas cancer using 13089-1-AP (TRX2 antibody) at dilution of 1:100 (under 10x lens).