

For Research Use Only

FREM1 Polyclonal antibody, PBS Only

Catalog Number: 13086-1-PBS



Basic Information

Catalog Number: 13086-1-PBS	GenBank Accession Number: BC031064	Purification Method: Antigen affinity purification
Size: 1 mg/ml	GeneID (NCBI): 158326	
Source: Rabbit	UNIPROT ID: Q5H8C1	
Isotype: IgG	Full Name: FRAS1 related extracellular matrix 1	
Immunogen Catalog Number: AG3617	Calculated MW: 2179aa, 244 kDa, 149.3 kDa	
	Observed MW: 40-43 kDa, 70-80 kDa	

Applications

Tested Applications:
WB, IHC, IF/ICC, Indirect ELISA

Species Specificity:
human

Background Information

FREM1, C9orf143, C9orf145, C9orf154 and QBRICK, is an extracellular matrix protein that plays a role in epidermal differentiation and is required for epidermal adhesion during embryonic development. This antibody recognizes isoform 1 (244 kDa), isoform 2 (80 kDa) and isoform 3 (43 kDa).

Storage

Storage:
Store at -80°C.
The product is shipped with ice packs. Upon receipt, store it immediately at -80°C

Storage Buffer:
PBS Only

For technical support and original validation data for this product please contact:

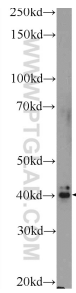
T: 4006900926

E: Proteintech-CN@ptglab.com

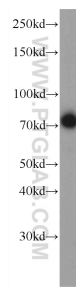
W: ptgcn.com

This product is exclusively available under Proteintech Group brand and is not available to purchase from any other manufacturer.

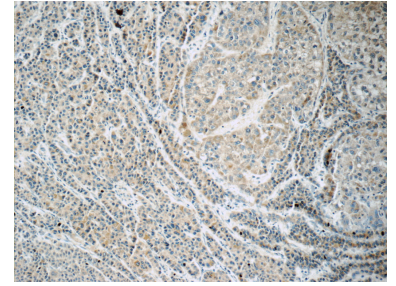
Selected Validation Data



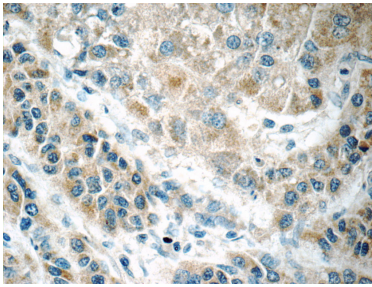
human plasma were subjected to SDS PAGE followed by western blot with 13086-1-AP (FREM1 Antibody) at dilution of 1:300 incubated at 4 degree celsius over night. This data was developed using the same antibody clone with 13086-1-PBS in a different storage buffer formulation.



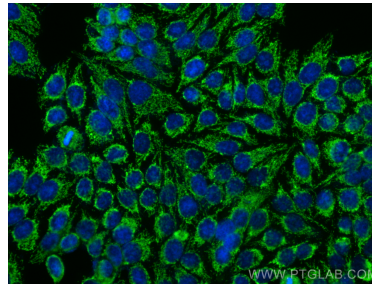
HepG2 cells were subjected to SDS PAGE followed by western blot with 13086-1-AP (FREM1 Antibody) at dilution of 1:300 incubated at 4 degree celsius over night. This data was developed using the same antibody clone with 13086-1-PBS in a different storage buffer formulation.



Immunohistochemical analysis of paraffin-embedded human liver cancer tissue slide using 13086-1-AP (FREM1 Antibody) at dilution of 1:50 (under 10x lens). This data was developed using the same antibody clone with 13086-1-PBS in a different storage buffer formulation.



Immunohistochemical analysis of paraffin-embedded human liver cancer tissue slide using 13086-1-AP (FREM1 Antibody) at dilution of 1:50 (under 40x lens). This data was developed using the same antibody clone with 13086-1-PBS in a different storage buffer formulation.



Immunofluorescent analysis of (-20°C Ethanol) fixed HepG2 cells using FREM1 antibody (13086-1-AP) at dilution of 1:400 and CoraLite®488-Conjugated Goat Anti-Rabbit IgG(H+L) (SA00013-2). This data was developed using the same antibody clone with 13086-1-PBS in a different storage buffer formulation.