

SLC25A32 Polyclonal antibody

Catalog Number: 13080-1-AP

Featured Product

1 Publications

Basic Information

Catalog Number:

13080-1-AP

Size:

500 µg/ml

Source:

Rabbit

Isotype:

IgG

Immunogen Catalog Number:

AG3722

GenBank Accession Number:

BC021893

GeneID (NCBI):

81034

UNIPROT ID:

Q9H2D1

Full Name:

solute carrier family 25, member 32

Calculated MW:

315 aa, 35 kDa

Observed MW:

35-40 kDa

Purification Method:

Antigen affinity purification

Recommended Dilutions:

WB 1:500-1:2000

IHC 1:200-1:800

Applications

Tested Applications:

IHC, WB, ELISA

Cited Applications:

WB, IHC

Species Specificity:

human

Cited Species:

human

Note-IHC: suggested antigen retrieval with TE buffer pH 9.0; (*) Alternatively, antigen retrieval may be performed with citrate buffer pH 6.0

Positive Controls:

WB : HeLa cells, K-562 cells, MCF-7 cells

IHC : human prostate cancer tissue,

Background Information

Solute carrier family 25 member 32 (SLC25A32) can transfer tetrahydrofolate (THF) from cellular cytoplasm to the mitochondria as a mitochondrial folate transporter (MFT). It has been reported that SLC25A32 can also transport FAD across the mitochondrial inner membrane. Chronic alcohol exposure affects mitochondrial folate uptake and may affect the transcription of the SLC25A32. And functional SLC25A32 defect is associated with the cranial neural tube defects (PMID: 21956163; 29666258)

Notable Publications

Author	Pubmed ID	Journal	Application
Zhiwei Xue	37365560	BMC Cancer	WB, IHC

Storage

Storage:

Store at -20°C. Stable for one year after shipment.

Storage Buffer:

PBS with 0.02% sodium azide and 50% glycerol pH 7.3.

Aliquoting is unnecessary for -20°C storage

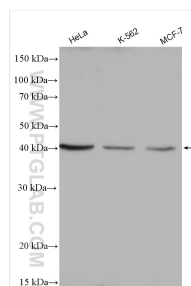
For technical support and original validation data for this product please contact:

T: 4006900926

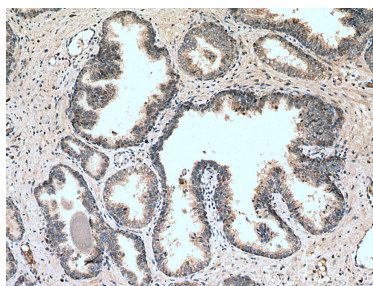
E: Proteintech-CN@ptglab.comW: ptgcn.com

This product is exclusively available under Proteintech Group brand and is not available to purchase from any other manufacturer.

Selected Validation Data



Various lysates were subjected to SDS PAGE followed by western blot with 13080-1-AP (SLC25A32 antibody) at dilution of 1:1000 incubated at room temperature for 1.5 hours.



Immunohistochemical analysis of paraffin-embedded human prostate cancer tissue slide using 13080-1-AP (SLC25A32 antibody) at dilution of 1:400 (under 10x lens). Heat mediated antigen retrieval with Tris-EDTA buffer (pH 9.0).