

For Research Use Only

MACF1 Polyclonal antibody

Catalog Number: 13058-1-AP

Featured Product

9 Publications



Basic Information

Catalog Number:

13058-1-AP

Concentration:

550 µg/ml

Source:

Rabbit

Isotype:

IgG

Immunogen Catalog Number:

AG3730

GenBank Accession Number:

BC007330

GeneID (NCBI):

23499

UNIPROT ID:

Q9UPN3

Full Name:

microtubule-actin crosslinking factor

1

Calculated MW:

5430 aa, 620 kDa

Observed MW:

600 kDa

Purification Method:

Antigen affinity purification

Recommended Dilutions:

WB 1:500-1:3000

IHC 1:50-1:500

IF/ICC 1:200-1:800

Applications

Tested Applications:

WB, IHC, IF/ICC, ELISA

Cited Applications:

WB, IHC

Species Specificity:

human, mouse

Cited Species:

human, mouse

Note-IHC: suggested antigen retrieval with TE buffer pH 9.0; (*) Alternatively, antigen retrieval may be performed with citrate buffer pH 6.0

Positive Controls:

WB : U-87 MG cells, NIH/3T3 cells, mouse lung tissue

IHC : human lung tissue, human skeletal muscle tissue, human heart tissue

IF/ICC : U-251 cells, NIH/3T3 cells

Background Information

MACF1, also called ACF7 (actin crosslinking family 7), is a member of the spectraplakin family and is a ubiquitously expressed 614 kDa protein. This protein facilitates actin-microtubule interactions at the cell periphery and couples the microtubule network to cellular junctions. It displays a conserved role in membrane protrusion formation during evolution. The two major MACF1 isoforms characterized to date, MACF1a and MACF1b, result from alternative splicing. Both proteins contain N-terminal actin-binding domains (ABD), followed by plakin domains, extended spectrin repeat domains, EF-hand motifs, and C-terminal microtubule-binding domains (MTBDs). MACF1 is expressed in numerous tissue, including the skin, brain, skeletal muscle, and heart.

Notable Publications

| Author | Pubmed ID | Journal | Application |
|-----------|-----------|-------------------|-------------|
| Ying Hsu | 29049287 | PLoS Genet | WB |
| Qian Yao | 29312635 | Oncotarget | WB |
| Lifang Hu | 33664480 | Cell Death Differ | WB |

Storage

Storage:

Store at -20°C. Stable for one year after shipment.

Storage Buffer:

PBS with 0.02% sodium azide and 50% glycerol pH 7.3.

Aliquoting is unnecessary for -20°C storage

For technical support and original validation data for this product please contact:

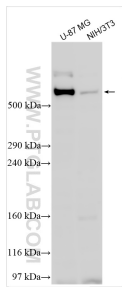
T: 4006900926

E: Proteintech-CN@ptglab.com

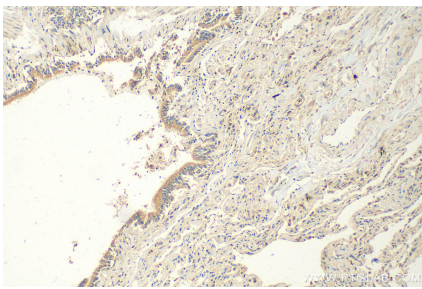
W: ptgcn.com

This product is exclusively available under Proteintech Group brand and is not available to purchase from any other manufacturer.

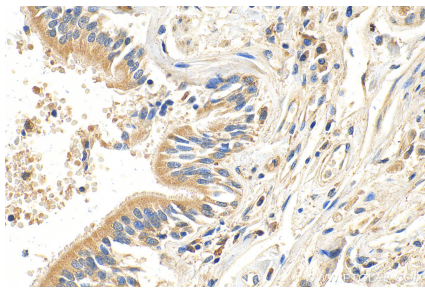
Selected Validation Data



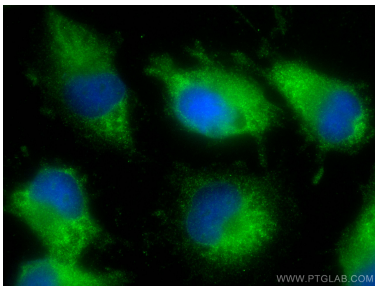
Various lysates were subjected to SDS PAGE followed by western blot with 13058-1-AP (MACF1 antibody) at dilution of 1:1500 incubated at room temperature for 1.5 hours.



Immunohistochemical analysis of paraffin-embedded human lung tissue slide using 13058-1-AP (MACF1 antibody) at dilution of 1:200 (under 10x lens). Heat mediated antigen retrieval with Tris-EDTA buffer (pH 9.0).



Immunohistochemical analysis of paraffin-embedded human lung tissue slide using 13058-1-AP (MACF1 antibody) at dilution of 1:200 (under 40x lens). Heat mediated antigen retrieval with Tris-EDTA buffer (pH 9.0).



Immunofluorescent analysis of (-20°C Ethanol) fixed U-251 cells using MACF1 antibody (13058-1-AP) at dilution of 1:400 and CoraLite®488-Conjugated Goat Anti-Rabbit IgG(H+L).