

ASPRV1 Polyclonal antibody

Catalog Number: 13052-1-AP

Basic Information

Catalog Number:

13052-1-AP

Size:

750 µg/ml

Source:

Rabbit

Isotype:

IgG

Immunogen Catalog Number:

AG3719

GenBank Accession Number:

BC031997

GeneID (NCBI):

151516

UNIPROT ID:

Q53RT3

Full Name:

aspartic peptidase, retroviral-like 1

Calculated MW:

343 aa, 37 kDa

Observed MW:

28 kDa, 37 kDa

Purification Method:

Antigen affinity purification

Recommended Dilutions:

WB 1:500-1:2000

Applications

Tested Applications:

WB, ELISA

Species Specificity:

human, mouse, rat

Positive Controls:

WB : mouse skin tissue, mouse brain tissue

Background Information

The human retroviral-like aspartic protease 1 (ASPRV1) is a mammalian retroviral-like enzyme that catalyzes a critical proteolytic step during epidermal differentiation; therefore, it is also referred to as skin-specific aspartic protease (SASPase).

Storage

Storage:

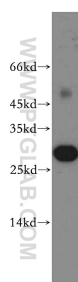
Store at -20°C. Stable for one year after shipment.

Storage Buffer:

PBS with 0.02% sodium azide and 50% glycerol pH 7.3.

Aliquoting is unnecessary for -20°C storage

Selected Validation Data



mouse skin tissue were subjected to SDS PAGE followed by western blot with 13052-1-AP (ASPRV1 antibody) at dilution of 1:300 incubated at room temperature for 1.5 hours.