

For Research Use Only

FGFR2 Polyclonal antibody

Catalog Number: 13042-1-AP

8 Publications



Basic Information

Catalog Number: 13042-1-AP	GenBank Accession Number: BC039243	Purification Method: Antigen affinity purification
Size: 750 ug/ml	GeneID (NCBI): 2263	Recommended Dilutions: IHC 1:50-1:500 IF/ICC 1:200-1:800
Source: Rabbit	UNIPROT ID: P21802	
Isotype: IgG	Full Name: fibroblast growth factor receptor 2	
Immunogen Catalog Number: AG3701	Calculated MW: 709 aa, 79 kDa Observed MW:	

Applications

Tested Applications: IHC, IF/ICC, FC (Intra), ELISA	Positive Controls:
Cited Applications: IHC, IF	IHC : human breast cancer tissue, human prostate cancer tissue
Species Specificity: human	IF/ICC : HeLa cells, HepG2 cells
Cited Species: human, mouse	
Note-IHC: suggested antigen retrieval with TE buffer pH 9.0; (*) Alternatively, antigen retrieval may be performed with citrate buffer pH 6.0	

Background Information

FGFR2 (Fibroblast growth factor receptor 2) is a tyrosine-protein kinase that acts as a cell-surface receptor for fibroblast growth factors and plays an essential role in the regulation of cell proliferation, differentiation, migration, and apoptosis. Ligand binding leads to the activation of several signaling pathways, such as RAS, MAPK1/ERK2, MAPK3/ERK1, and the MAP Kinase signaling pathway, as well as the AKT1 signaling pathway. Mutations in the gene of FGFR2 are associated with Crouzon syndrome, Pfeiffer syndrome, Craniosynostosis, Apert syndrome, Jackson-Weiss syndrome, Beare-Stevenson cutis gyrata syndrome, Saethre-Chotzen syndrome, and syndromic craniosynostosis. This polyclonal antibody raised against 358-704aa of human FGFR2 can cross-react with other members of the FGFR family.

Notable Publications

Author	Pubmed ID	Journal	Application
Haie Qu	34487480	Anim Biotechnol	
Zhaodong Li	36143417	Life (Basel)	
Limin Wang	36305369	Tissue Eng Part A	IF

Storage

Storage:
Store at -20°C. Stable for one year after shipment.
Storage Buffer:
PBS with 0.02% sodium azide and 50% glycerol pH 7.3.
Aliquoting is unnecessary for -20°C storage

For technical support and original validation data for this product please contact:

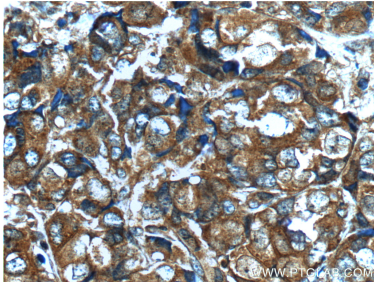
T: 4006900926

E: Proteintech-CN@ptglab.com

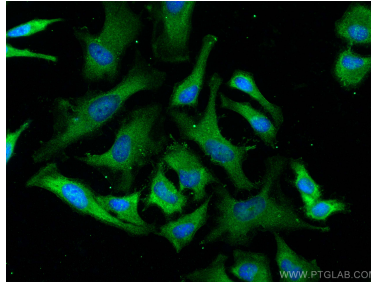
W: ptgcn.com

This product is exclusively available under Proteintech Group brand and is not available to purchase from any other manufacturer.

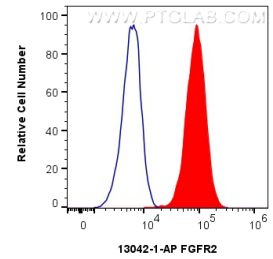
Selected Validation Data



Immunohistochemical analysis of paraffin-embedded human breast cancer tissue slide using 13042-1-AP (FGFR2 Antibody) at dilution of 1:200 (under 40x lens).



Immunofluorescent analysis of (-20°C Ethanol) fixed HeLa cells using FGFR2 antibody (13042-1-AP) at dilution of 1:400 and CoraLite®488-Conjugated AffiniPure Goat Anti-Rabbit IgG(H+L) (SA00013-2).



1X10⁶ HepG2 cells were intracellularly stained with 0.8 ug Anti-Human FGFR2 (13042-1-AP) and CoraLite®488-Conjugated AffiniPure Goat Anti-Rabbit IgG(H+L) at dilution 1:1000 (red), or 0.8 ug Isotype Control. Cells were fixed with 4% PFA and permeabilized with Flow Cytometry Perm Buffer (PF00011-C).