

For Research Use Only

# L-Plastin Polyclonal antibody

Catalog Number: 13025-1-AP

Featured Product

10 Publications



## Basic Information

### Catalog Number:

13025-1-AP

### Size:

300 µg/ml

### Source:

Rabbit

### Isotype:

IgG

### Immunogen Catalog Number:

AG3571

### GenBank Accession Number:

BC010271

### GeneID (NCBI):

3936

### UNIPROT ID:

P13796

### Full Name:

lymphocyte cytosolic protein 1 (L-plastin)

### Calculated MW:

627 aa, 64 kDa

### Observed MW:

64-70 kDa

### Purification Method:

Antigen affinity purification

### Recommended Dilutions:

WB 1:500-1:2000

IP 0.5-4.0 µg for 1.0-3.0 mg of total protein lysate

IHC 1:20-1:200

## Applications

### Tested Applications:

WB, IP, IHC, ELISA

### Cited Applications:

WB, IHC, IF

### Species Specificity:

human, mouse, rat

### Cited Species:

human, mouse, monkey, zebrafish, hamster

**Note-IHC: suggested antigen retrieval with TE buffer pH 9.0; (\*) Alternatively, antigen retrieval may be performed with citrate buffer pH 6.0**

### Positive Controls:

**WB:** Jurkat cells, K-562 cells, mouse spleen tissue

**IP:** Jurkat cells,

**IHC:** human lymphoma tissue, human small intestine tissue

## Background Information

## Notable Publications

Author	Pubmed ID	Journal	Application
Wenfang Bao	35578065	Pharm Res	WB,FC
Hui He	24442187	Mol Biosyst	IHC
Man-Jing Jiang	34120311	J Nat Med	WB

## Storage

### Storage:

Store at -20°C. Stable for one year after shipment.

### Storage Buffer:

PBS with 0.02% sodium azide and 50% glycerol pH 7.3.

Aliquoting is unnecessary for -20°C storage

For technical support and original validation data for this product please contact:

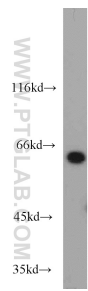
T: 4006900926

E: [Proteintech-CN@ptglab.com](mailto:Proteintech-CN@ptglab.com)

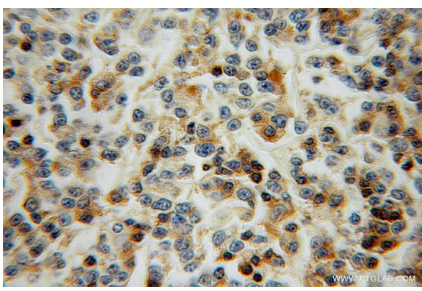
W: [ptgcn.com](http://ptgcn.com)

**This product is exclusively available under Proteintech Group brand and is not available to purchase from any other manufacturer.**

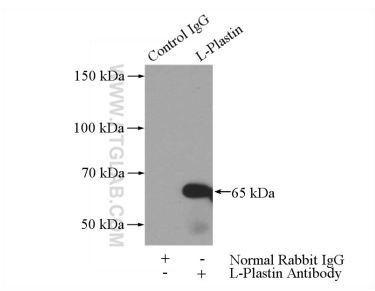
Selected Validation Data



Jurkat cells were subjected to SDS PAGE followed by western blot with 13025-1-AP (L-Plastin antibody) at dilution of 1:1000 incubated at room temperature for 1.5 hours.



Immunohistochemical analysis of paraffin-embedded human lymphoma using 13025-1-AP (L-Plastin antibody) at dilution of 1:50 (under 10x lens).



IP result of anti-L-Plastin (IP:13025-1-AP, 4ug; Detection:13025-1-AP 1:1000) with Jurkat cells lysate 2400ug.