

For Research Use Only

MMP23B Polyclonal antibody, PBS Only

Catalog Number:13020-1-PBS



Basic Information

Catalog Number: 13020-1-PBS	GenBank Accession Number: BC025719	Purification Method: Antigen affinity purification
Concentration: 1mg/ml	GeneID (NCBI): 8510	
Source: Rabbit	UNIPROT ID: O75900	
Isotype: IgG	Full Name: matrix metalloproteinase 23B	
Immunogen Catalog Number: AG4113	Calculated MW: 390 aa, 44 kDa	
	Observed MW: 46-60 kDa	

Applications

Tested Applications:
WB, IHC, IF/ICC, FC (Intra), ELISA

Species Specificity:
human, mouse

Background Information

MMP23B(matrix metalloproteinase 23B) is also named as MMP21, MMP22.It is a regulator in matrix remodeling and may be playing a role in enchondral bone formation and in regulation of cranial suture closure .It has 3 isoforms produced by alternative splicing with the molecular weight of 44kDa,48kDa and 46kDa,respectively.It also can be N-glycosylated.

Storage

Storage:
Store at -80°C.
The product is shipped with ice packs. Upon receipt, store it immediately at -80°C

Storage Buffer:
PBS only, pH7.3

For technical support and original validation data for this product please contact:

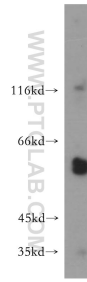
T: 4006900926

E: Proteintech-CN@ptglab.com

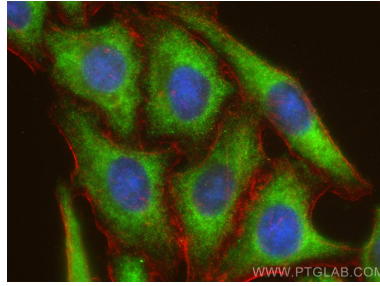
W: ptgcn.com

This product is exclusively available under Proteintech Group brand and is not available to purchase from any other manufacturer.

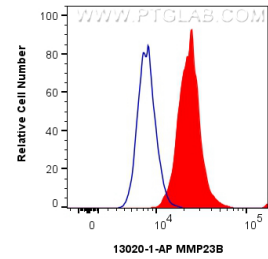
Selected Validation Data



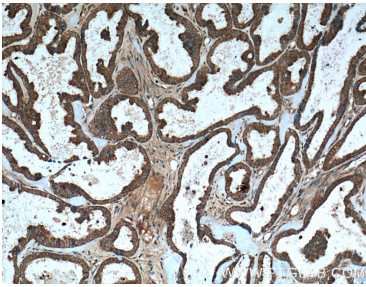
A549 cells were subjected to SDS PAGE followed by western blot with 13020-1-AP (MMP23B antibody) at dilution of 1:500 incubated at room temperature for 1.5 hours. This data was developed using the same antibody clone with 13020-1-PBS in a different storage buffer formulation.



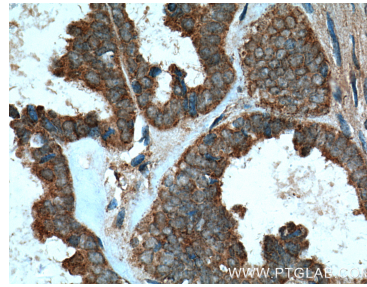
Immunofluorescent analysis of (-20°C Ethanol) fixed HepG2 cells using MMP23B antibody (13020-1-AP) at dilution of 1:200 and Multi-rAb CoraLite® Plus 488-Goat Anti-Rabbit Recombinant Secondary Antibody (H+L) (RGAR002), CL594-Phalloidin (red). This data was developed using the same antibody clone with 13020-1-PBS in a different storage buffer formulation.



1×10^6 HepG2 cells were intracellularly stained with 0.25 ug MMP23B Polyclonal antibody (13020-1-AP) and CoraLite®488-Conjugated Goat Anti-Rabbit IgG(H+L) (SA00013-2)(red), or 0.25 ug Isotype Control (blue). Cells were fixed with 4% PFA and permeabilized with Flow Cytometry Perm Buffer (PF00011-C). This data was developed using the same antibody clone with 13020-1-PBS in a different storage buffer formulation.



Immunohistochemical analysis of paraffin-embedded human ovary tumor tissue slide using 13020-1-AP (MMP23B Antibody) at dilution of 1:200 (under 10x lens). Heat mediated antigen retrieval with Tris-EDTA buffer (pH 9.0). This data was developed using the same antibody clone with 13020-1-PBS in a different storage buffer formulation.



Immunohistochemical analysis of paraffin-embedded human ovary tumor tissue slide using 13020-1-AP (MMP23B Antibody) at dilution of 1:200 (under 40x lens). Heat mediated antigen retrieval with Tris-EDTA buffer (pH 9.0). This data was developed using the same antibody clone with 13020-1-PBS in a different storage buffer formulation.