

For Research Use Only

# STAM2 Polyclonal antibody

Catalog Number: 13009-1-AP

Featured Product



## Basic Information

### Catalog Number:

13009-1-AP

### Size:

450 µg/ml

### Source:

Rabbit

### Isotype:

IgG

### Immunogen Catalog Number:

AG3698

### GenBank Accession Number:

BC028740

### GeneID (NCBI):

10254

### UNIPROT ID:

O75886

### Full Name:

signal transducing adaptor molecule  
(SH3 domain and ITAM motif) 2

### Calculated MW:

58 kDa

### Observed MW:

68 kDa

### Purification Method:

Antigen affinity purification

### Recommended Dilutions:

WB 1:1000-1:5000

IHC 1:50-1:500

IF/ICC 1:200-1:800

## Applications

### Tested Applications:

WB, IHC, IF/ICC, ELISA

### Species Specificity:

human, mouse, rat

**Note-IHC: suggested antigen retrieval with TE buffer pH 9.0; (\*) Alternatively, antigen retrieval may be performed with citrate buffer pH 6.0**

### Positive Controls:

WB : HeLa cells, mouse brain tissue, HepG2 cells

IHC : mouse heart tissue, mouse kidney tissue

IF/ICC : HeLa cells,

## Background Information

## Storage

### Storage:

Store at -20°C. Stable for one year after shipment.

### Storage Buffer:

PBS with 0.02% sodium azide and 50% glycerol pH 7.3.

Aliquoting is unnecessary for -20°C storage

For technical support and original validation data for this product please contact:

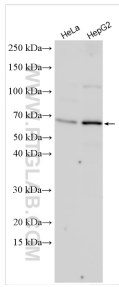
T: 4006900926

E: [Proteintech-CN@ptglab.com](mailto:Proteintech-CN@ptglab.com)

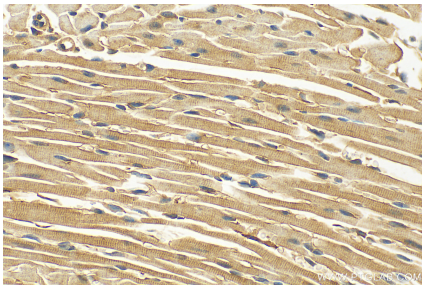
W: [ptgcn.com](http://ptgcn.com)

This product is exclusively available under Proteintech Group brand and is not available to purchase from any other manufacturer.

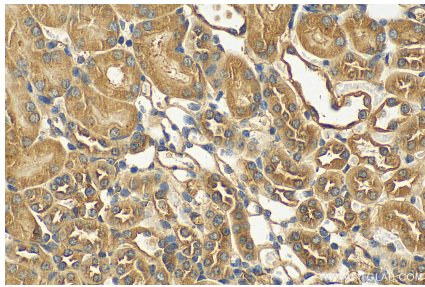
Selected Validation Data



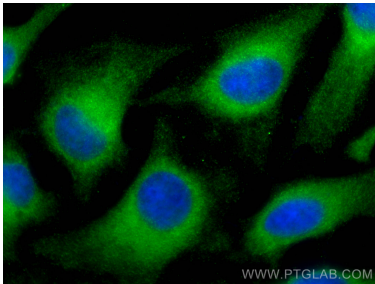
Various lysates were subjected to SDS PAGE followed by western blot with 13009-1-AP (STAM2 antibody) at dilution of 1:2500 incubated at room temperature for 1.5 hours.



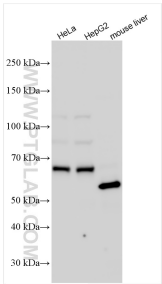
Immunohistochemical analysis of paraffin-embedded mouse heart tissue slide using 13009-1-AP (STAM2 antibody) at dilution of 1:200 (under 40x lens).



Immunohistochemical analysis of paraffin-embedded mouse kidney tissue slide using 13009-1-AP (STAM2 antibody) at dilution of 1:200 (under 40x lens).



Immunofluorescent analysis of (-20°C Methanol) fixed HeLa cells using STAM2 antibody (13009-1-AP) at dilution of 1:400 and CoraLite®488-Conjugated AffiniPure Goat Anti-Rabbit IgG(H+L).



Various lysates were subjected to SDS PAGE followed by western blot with 13009-1-AP (STAM2 antibody) at dilution of 1:3000 incubated at room temperature for 1.5 hours.