

For Research Use Only

CMAS Polyclonal antibody, PBS Only

Catalog Number: 13006-1-PBS



Basic Information

Catalog Number:

13006-1-PBS

Concentration:

1 mg/ml

Source:

Rabbit

Isotype:

IgG

Immunogen Catalog Number:

AG3686

GenBank Accession Number:

BC016609

GeneID (NCBI):

55907

UNIPROT ID:

Q8NFW8

Full Name:

cytidine monophosphate N-acetylneuraminic acid synthetase

Calculated MW:

48 kDa

Observed MW:

48 kDa

Purification Method:

Antigen affinity purification

Applications

Tested Applications:

WB, IHC, IF/ICC, Indirect ELISA

Species Specificity:

human, mouse, rat

Background Information

Cytidine monophosphate N-acetylneuraminic acid synthetase (CMAS), a key enzyme in the incorporation pathway, catalyzes the synthesis of CMP-sialic acid by utilizing CTP and sialic acid. Neu5Ac is activated in the nucleus by CMAS to form CMP-Neu5Ac, which is transported to the Golgi apparatus by SLC35A1 for sialylation of glycoproteins and gangliosides catalyzed by specific sialyl transferases (PMID: 30568043). Low CMAS gene expression correlated with reduced recurrence-free survival in a human colorectal cancer cohort (PMID: 30578646). Western blots indicated a range of bands at ~ 48 kDa.

Storage

Storage:

Store at -80°C.

The product is shipped with ice packs. Upon receipt, store it immediately at -80°C

Storage Buffer:

PBS only, pH7.3

For technical support and original validation data for this product please contact:

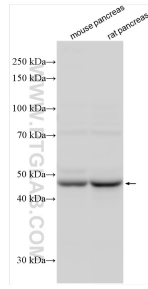
T: 4006900926

E: Proteintech-CN@ptglab.com

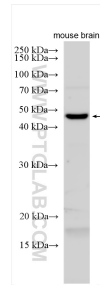
W: ptgcn.com

This product is exclusively available under Proteintech Group brand and is not available to purchase from any other manufacturer.

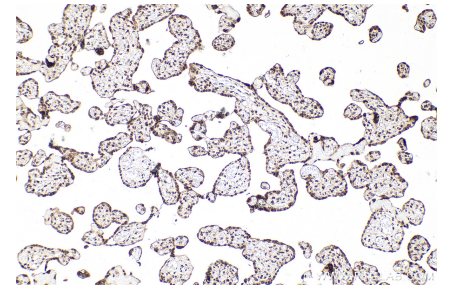
Selected Validation Data



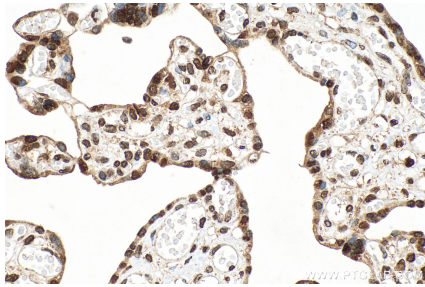
Various lysates were subjected to SDS PAGE followed by western blot with 13006-1-AP (CMAS antibody) at dilution of 1:4000 incubated at room temperature for 1.5 hours. This data was developed using the same antibody clone with 13006-1-PBS in a different storage buffer formulation.



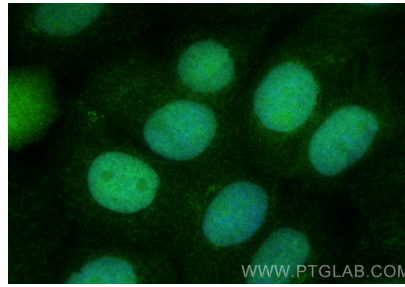
Various lysates were subjected to SDS PAGE followed by western blot with 13006-1-AP (CMAS antibody) at dilution of 1:4000 incubated at room temperature for 1.5 hours. This data was developed using the same antibody clone with 13006-1-PBS in a different storage buffer formulation.



Immunohistochemical analysis of paraffin-embedded human placenta tissue slide using 13006-1-AP (CMAS antibody) at dilution of 1:800 (under 10x lens). Heat mediated antigen retrieval with Tris-EDTA buffer (pH 9.0). This data was developed using the same antibody clone with 13006-1-PBS in a different storage buffer formulation.



Immunohistochemical analysis of paraffin-embedded human placenta tissue slide using 13006-1-AP (CMAS antibody) at dilution of 1:800 (under 40x lens). Heat mediated antigen retrieval with Tris-EDTA buffer (pH 9.0). This data was developed using the same antibody clone with 13006-1-PBS in a different storage buffer formulation.



Immunofluorescent analysis of (4% PFA) fixed A431 cells using CMAS antibody (13006-1-AP) at dilution of 1:400 and Multi-rAb CoraLite® Plus 488-Goat Anti-Rabbit Recombinant Secondary Antibody (H+L) (RGAR002). This data was developed using the same antibody clone with 13006-1-PBS in a different storage buffer formulation.