

For Research Use Only

PPIG Polyclonal antibody, PBS Only

Catalog Number: 12985-1-PBS



Basic Information

Catalog Number:

12985-1-PBS

Source:

Rabbit

Isotype:

IgG

Immunogen Catalog Number:

AG3622

GenBank Accession Number:

BC001555

GeneID (NCBI):

9360

UNIPROT ID:

Q13427

Full Name:

peptidylprolyl isomerase G
(cyclophilin G)

Calculated MW:

739 aa, 87 kDa

Observed MW:

89 kDa

Purification Method:

Antigen affinity purification

Applications

Tested Applications:

WB, IHC, IF/ICC, Indirect ELISA

Species Specificity:

human, mouse, rat

Background Information

Peptidyl-prolyl cis-trans isomerase G (commonly abbreviated as PPIG) belongs to the cyclophilin subfamily of peptidyl-prolyl cis-trans isomerases (PPIases), which act as molecular chaperones to accelerate protein folding and regulate vital cellular processes.

Storage

Storage:

Store at -80°C.

The product is shipped with ice packs. Upon receipt, store it immediately at -80°C

Storage Buffer:

PBS only, pH7.3

For technical support and original validation data for this product please contact:

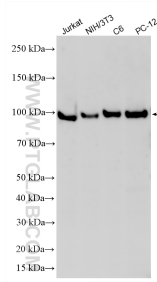
T: 4006900926

E: Proteintech-CN@ptglab.com

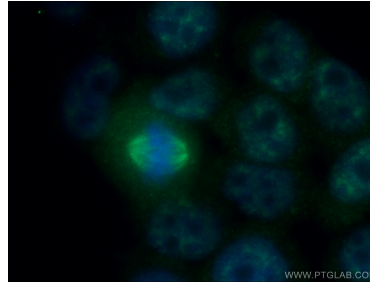
W: ptgcn.com

This product is exclusively available under Proteintech Group brand and is not available to purchase from any other manufacturer.

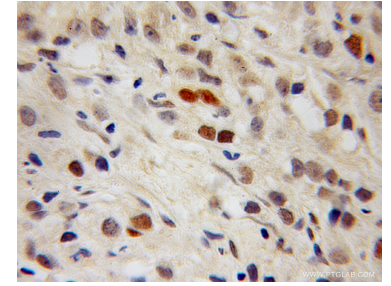
Selected Validation Data



Various lysates were subjected to SDS PAGE followed by western blot with 12985-1-AP (PPIG antibody) at dilution of 1:800 incubated at room temperature for 1.5 hours. This data was developed using the same antibody clone with 12985-1-PBS in a different storage buffer formulation.



Immunofluorescent analysis of (4% PFA) fixed HeLa cells using 12985-1-AP (PPIG antibody) at dilution of 1:50 and Alexa Fluor 488-conjugated AffiniPure Goat Anti-Rabbit IgG(H+L). This data was developed using the same antibody clone with 12985-1-PBS in a different storage buffer formulation.



Immunohistochemical analysis of paraffin-embedded human prostate cancer using 12985-1-AP (PPIG antibody) at dilution of 1:100 (under 10x lens). This data was developed using the same antibody clone with 12985-1-PBS in a different storage buffer formulation.