

For Research Use Only

# PPIG Polyclonal antibody

Catalog Number: 12985-1-AP

1 Publications



## Basic Information

Catalog Number:

12985-1-AP

Size:

150 µg/ml

Source:

Rabbit

Isotype:

IgG

Immunogen Catalog Number:

AG3622

GenBank Accession Number:

BC001555

GeneID (NCBI):

9360

UNIPROT ID:

Q13427

Full Name:

peptidylprolyl isomerase G  
(cyclophilin G)

Calculated MW:

739 aa, 87 kDa

Observed MW:

89 kDa

Purification Method:

Antigen affinity purification

Recommended Dilutions:

WB 1:500-1:1000

IHC 1:20-1:200

IF/ICC 1:50-1:500

## Applications

Tested Applications:

WB, IHC, IF/ICC, ELISA

Cited Applications:

IF

Species Specificity:

human, mouse

Cited Species:

human

**Note-IHC: suggested antigen retrieval with  
TE buffer pH 9.0; (\*) Alternatively, antigen  
retrieval may be performed with citrate  
buffer pH 6.0**

Positive Controls:

WB : human liver tissue, Jurkat cells, NIH/3T3 cells,  
SH-SY5Y cells

IHC : human prostate cancer tissue,

IF/ICC : HeLa cells,

## Background Information

### Notable Publications

Author	Pubmed ID	Journal	Application
Joonwon Kim	38691600	Sci Adv	IF

## Storage

Storage:

Store at -20°C. Stable for one year after shipment.

Storage Buffer:

PBS with 0.02% sodium azide and 50% glycerol pH 7.3.

Aliquoting is unnecessary for -20°C storage

For technical support and original validation data for this product please contact:

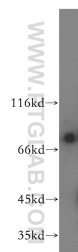
T: 4006900926

E: [Proteintech-CN@ptglab.com](mailto:Proteintech-CN@ptglab.com)

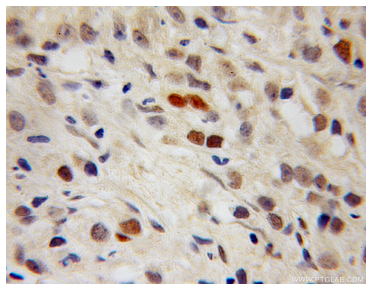
W: [ptgcn.com](http://ptgcn.com)

This product is exclusively available under Proteintech Group brand and is not available to purchase from any other manufacturer.

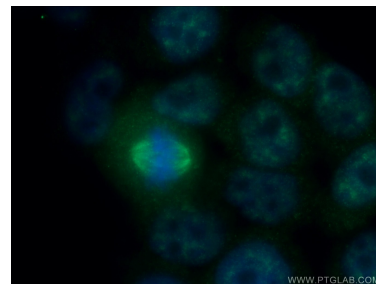
## Selected Validation Data



human liver tissue were subjected to SDS PAGE followed by western blot with 12985-1-AP (PPIG antibody) at dilution of 1:400 incubated at room temperature for 1.5 hours.



Immunohistochemical analysis of paraffin-embedded human prostate cancer using 12985-1-AP (PPIG antibody) at dilution of 1:100 (under 10x lens).



Immunofluorescent analysis of (4% PFA) fixed HeLa cells using 12985-1-AP (PPIG antibody) at dilution of 1:50 and Alexa Fluor 488-conjugated AffiniPure Goat Anti-Rabbit IgG(H+L).