

TPTE Polyclonal antibody

Catalog Number: 12982-1-AP

Basic Information

Catalog Number: 12982-1-AP	GenBank Accession Number: BC028719	Purification Method: Antigen affinity purification
Size: 213 µg/ml	GeneID (NCBI): 7179	Recommended Dilutions: WB 1:500-1:2000
Source: Rabbit	UNIPROT ID: P56180	IHC 1:20-1:200
Isotype: IgG	Full Name: transmembrane phosphatase with tensin homology	IF/ICC 1:10-1:100
Immunogen Catalog Number: AG3606	Calculated MW: 62 kDa, 64 kDa	
	Observed MW: 62 kDa, 64 kDa	

Applications

Tested Applications: WB, IHC, IF/ICC, ELISA	Positive Controls:
Species Specificity: human, mouse	WB : HepG2 cells, HEK-293 cells, human testis tissue, BxPC-3 cells, mouse testis tissue
Note-IHC: suggested antigen retrieval with TE buffer pH 9.0; (*) Alternatively, antigen retrieval may be performed with citrate buffer pH 6.0	IHC : human testis tissue, IF/ICC : BxPC-3 cells,

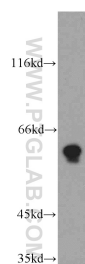
Background Information

TPTE(Transmembrane phosphatase with tensin homology) is also named as CT44, BJ-HCC-5 and belongs to the non receptor class of the protein-tyrosine phosphatase family. The gene encodes a predicted polypeptide of 551 amino acids with at least 2 potential transmembrane domains and a tyrosine phosphatase motif. TPTE may be involved in the signal transduction pathways of the endocrine or spermatogenic function of the testis(PMID:10598804). It is putatively involved in linking the cell membrane to cytoskeleton. This protein is very similar in sequence to PTEN through the phosphatase and C2 domains, but lacks a PDZ binding motif and an extensively phosphorylated C-terminal tail(PMID:17240336). It has 4 isoforms produced by alternative splicing.

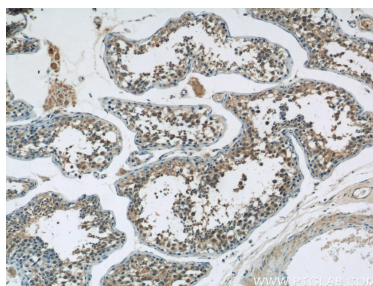
Storage

Storage:
Store at -20°C. Stable for one year after shipment.
Storage Buffer:
PBS with 0.02% sodium azide and 50% glycerol pH 7.3.
Aliquoting is unnecessary for -20°C storage

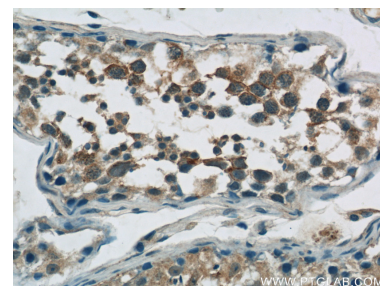
Selected Validation Data



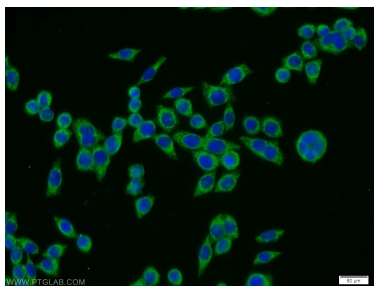
HepG2 cells were subjected to SDS PAGE followed by western blot with 12982-1-AP (TPTE antibody) at dilution of 1:500 incubated at room temperature for 1.5 hours.



Immunohistochemical analysis of paraffin-embedded human testis tissue slide using 12982-1-AP (TPTE Antibody) at dilution of 1:50 (under 10x lens).



Immunohistochemical analysis of paraffin-embedded human testis tissue slide using 12982-1-AP (TPTE Antibody) at dilution of 1:50 (under 40x lens).



Immunofluorescent analysis of BxPC-3 cells using 12982-1-AP (TPTE antibody) at dilution of 1:25 and Alexa Fluor 488-conjugated AffiniPure Goat Anti-Rabbit IgG(H+L).