

For Research Use Only

OPRL1 Polyclonal antibody

Catalog Number: 12970-1-AP

Featured Product

5 Publications



Basic Information

Catalog Number:

12970-1-AP

Size:

500 µg/ml

Source:

Rabbit

Isotype:

IgG

Immunogen Catalog Number:

AG4079

GenBank Accession Number:

BC038433

GeneID (NCBI):

4987

UNIPROT ID:

P41146

Full Name:

opiate receptor-like 1

Calculated MW:

370 aa, 41 kDa

Observed MW:

45 kDa

Purification Method:

Antigen affinity purification

Recommended Dilutions:

WB 1:500-1:2000

IP 0.5-4.0 µg for 1.0-3.0 mg of total protein lysate

IHC 1:20-1:200

Applications

Tested Applications:

WB, IP, IHC, ELISA

Cited Applications:

WB, IHC

Species Specificity:

human, mouse, rat

Cited Species:

human, rat

Note-IHC: suggested antigen retrieval with TE buffer pH 9.0; (*) Alternatively, antigen retrieval may be performed with citrate buffer pH 6.0

Positive Controls:

WB : HeLa cells, SH-SY5Y cells

IP : SH-SY5Y cells,

IHC : human gliomas tissue, mouse brain tissue

Background Information

The OPRL1 (opioid related nociceptin receptor 1) is the G-protein coupled receptor activated by the endogenous NC (neuropeptide nociceptin) (PMID:7566152). OPRL1 is widely expressed in the central nervous system, including the hippocampal dentate gyrus, cortical areas, striatum, thalamus, and hypothalamus (PMID:19501074). OPRL1 has been found to play an essential role in cognition, and to modulate inflammation and immune responses (PMID:30152845).

Notable Publications

Author	Pubmed ID	Journal	Application
Katarzyna Popiolek-Barczyk	25276817	Biomed Res Int	WB
Neili Xu	31865244	Int Immunopharmacol	WB, IHC
Anna Piotrowska	30076959	Biochim Biophys Acta	

Storage

Storage:

Store at -20°C. Stable for one year after shipment.

Storage Buffer:

PBS with 0.02% sodium azide and 50% glycerol pH 7.3.

Aliquoting is unnecessary for -20°C storage

For technical support and original validation data for this product please contact:

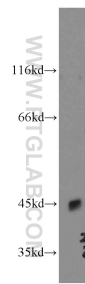
T: 4006900926

E: Proteintech-CN@ptglab.com

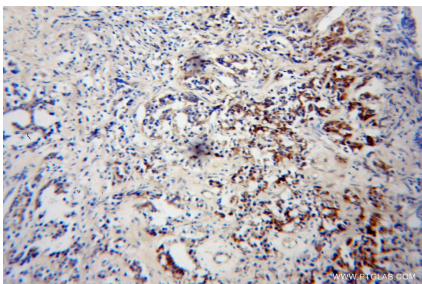
W: ptgcn.com

This product is exclusively available under Proteintech Group brand and is not available to purchase from any other manufacturer.

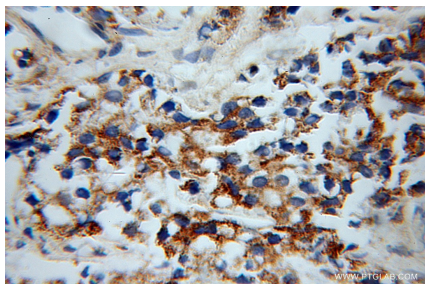
Selected Validation Data



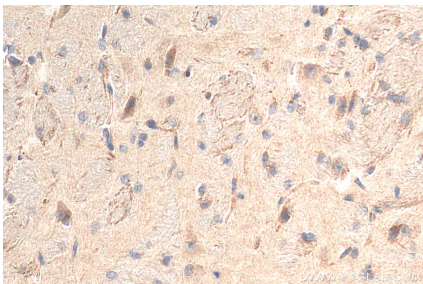
HeLa cells were subjected to SDS PAGE followed by western blot with 12970-1-AP (OPRL1 antibody) at dilution of 1:500 incubated at room temperature for 1.5 hours.



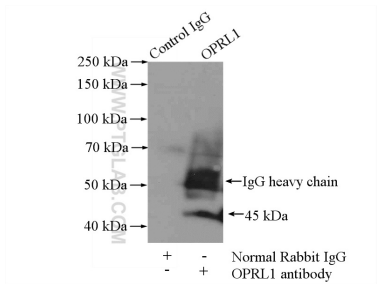
Immunohistochemical analysis of paraffin-embedded human gliomas using 12970-1-AP (OPRL1 antibody) at dilution of 1:100 (under 10x lens).



Immunohistochemical analysis of paraffin-embedded human gliomas using 12970-1-AP (OPRL1 antibody) at dilution of 1:100 (under 40x lens).



Immunohistochemical analysis of paraffin-embedded mouse brain tissue slide using 12970-1-AP (OPRL1 antibody) at dilution of 1:200 (under 40x lens). Heat mediated antigen retrieval with Tris-EDTA buffer (pH 9.0).



IP result of anti-OPRL1 (IP:12970-1-AP, 4ug; Detection:12970-1-AP 1:500) with SH-SY5Y cells lysate 2000ug.