

# ACP6 Polyclonal antibody

Catalog Number: 12965-1-AP

## Basic Information

**Catalog Number:**

12965-1-AP

**Size:**

650 µg/ml

**Source:**

Rabbit

**Isotype:**

IgG

**Immunogen Catalog Number:**

AG3633

**GenBank Accession Number:**

BC034686

**GeneID (NCBI):**

51205

**UNIPROT ID:**

Q9NPH0

**Full Name:**

acid phosphatase 6, lysophosphatidic

**Calculated MW:**

428 aa, 49 kDa

**Observed MW:**

49 kDa

**Purification Method:**

Antigen affinity purification

**Recommended Dilutions:**

WB 1:500-1:1000

IHC 1:20-1:200

## Applications

**Tested Applications:**

IHC, WB, ELISA

**Species Specificity:**

human, mouse

**Note-IHC:** suggested antigen retrieval with **TE buffer pH 9.0; (\*) Alternatively, antigen retrieval may be performed with citrate buffer pH 6.0**

**Positive Controls:**

**WB :** human liver tissue, mouse liver tissue

**IHC :** human prostate cancer tissue,

## Background Information

### Storage

**Storage:**

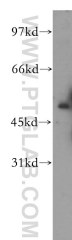
Store at -20°C. Stable for one year after shipment.

**Storage Buffer:**

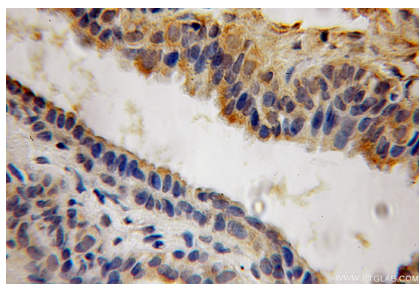
PBS with 0.02% sodium azide and 50% glycerol pH 7.3.

Aliquoting is unnecessary for -20°C storage

## Selected Validation Data



human liver tissue were subjected to SDS PAGE followed by western blot with 12965-1-AP (ACP6 antibody) at dilution of 1:300 incubated at room temperature for 1.5 hours.



Immunohistochemical analysis of paraffin-embedded human prostate cancer using 12965-1-AP (ACP6 antibody) at dilution of 1:100 (under 10x lens).