

For Research Use Only

TMPRSS6 Polyclonal antibody

Catalog Number: 12950-1-AP

2 Publications



Basic Information

Catalog Number:

12950-1-AP

Size:

150 µg/ml

Source:

Rabbit

Isotype:

IgG

Immunogen Catalog Number:

AG4076

GenBank Accession Number:

BC039082

GeneID (NCBI):

164656

UNIPROT ID:

Q8IU80

Full Name:

transmembrane protease, serine 6

Calculated MW:

89 kDa

Observed MW:

52 kDa

Purification Method:

Antigen affinity purification

Recommended Dilutions:

WB 1:500-1:1000

Applications

Tested Applications:

WB, ELISA

Cited Applications:

WB, IF

Species Specificity:

human, mouse, rat

Cited Species:

human, mouse

Positive Controls:

WB : HEK-293 cells, HepG2 cells, MCF-7 cells, mouse liver tissue

Background Information

The type II transmembrane serine protease TMPRSS6 (also known as matriptase-2) controls iron homeostasis through its negative regulation of expression of hepcidin, a key hormone involved in iron metabolism. Upstream of the hepcidin-regulated signaling pathway, TMPRSS6 cleaves its target substrate hemojuvelin (HJV) at the plasma membrane (PMID:21724843). It belongs to the peptidase S1 family. Defects in TMPRSS6 are the cause of iron-refractory iron deficiency anemia (IRIDA). It has 4 isoforms produced by alternative splicing.

Notable Publications

Author	Pubmed ID	Journal	Application
Jing Liu	30792208	Haematologica	WB
Yong Zuo	38218852	Cell Death Dis	WB, IF

Storage

Storage:

Store at -20°C. Stable for one year after shipment.

Storage Buffer:

PBS with 0.02% sodium azide and 50% glycerol pH 7.3.

Aliquoting is unnecessary for -20°C storage

For technical support and original validation data for this product please contact:

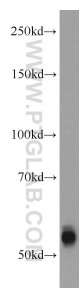
T: 4006900926

E: Proteintech-CN@ptglab.com

W: ptgcn.com

This product is exclusively available under Proteintech Group brand and is not available to purchase from any other manufacturer.

Selected Validation Data



HEK-293 cells were subjected to SDS PAGE followed by western blot with 12950-1-AP (TMPRSS6 antibody) at dilution of 1:500 incubated at room temperature for 1.5 hours.