

For Research Use Only

# IMPDH2 Polyclonal antibody

Catalog Number: 12948-1-AP

Featured Product

60 Publications



## Basic Information

Catalog Number:

12948-1-AP

Concentration:

500 ug/ml

Source:

Rabbit

Isotype:

IgG

Immunogen Catalog Number:

AG3632

GenBank Accession Number:

BC012840

GeneID (NCBI):

3615

UNIPROT ID:

P12268

Full Name:

IMP (inosine monophosphate) dehydrogenase 2

Calculated MW:

514 aa, 56 kDa

Observed MW:

56 kDa

Purification Method:

Antigen affinity purification

Recommended Dilutions:

WB: 1:5000-1:50000

IP: 0.5-4.0 ug for 1.0-3.0 mg of total protein lysate

IHC: 1:50-1:500

IF/ICC: 1:200-1:800

## Applications

Tested Applications:

WB, IHC, IF/ICC, IP, ELISA

Cited Applications:

WB, IHC, IF, IP, RIP, ELISA

Species Specificity:

human, mouse, rat

Cited Species:

human, mouse, rat, zebrafish

**Note-IHC: suggested antigen retrieval with TE buffer pH 9.0; (\*) Alternatively, antigen retrieval may be performed with citrate buffer pH 6.0**

Positive Controls:

WB : HeLa cells, rat heart tissue, A549 cells, MCF-7 cells, K-562 cells

IP : HeLa cells,

IHC : human lung cancer tissue, mouse brain tissue

IF/ICC : HeLa cells,

## Background Information

IMPDH2, also named as IMPD2, belongs to the IMPDH/GMPR family. It is a rate limiting enzyme in the de novo synthesis of guanine nucleotides and therefore is involved in the regulation of cell growth. It may also have a role in the development of malignancy and the growth progression of some tumors. IMPDH2 is a key enzyme in the purine nucleotide biosynthetic pathway and constitutes a pivotal biological target for immunosuppressant and antiviral drugs. (PMID:21181270) IMPDH2 is highly enriched in RR(filamentous rods and rings). This antibody may have cross-reaction with IMPDH1 due to the high homology.

## Notable Publications

Author	Pubmed ID	Journal	Application
Tai-Wei Li	36177032	Front Immunol	WB
Narges Ahangari	34498062	J Neuropathol Exp Neurol	IF
Shiyu Wang	34673127	Cancer Lett	RIP

## Storage

Storage:

Store at -20°C. Stable for one year after shipment.

Storage Buffer:

PBS with 0.02% sodium azide and 50% glycerol, pH7.3

Aliquoting is unnecessary for -20°C storage

For technical support and original validation data for this product please contact:

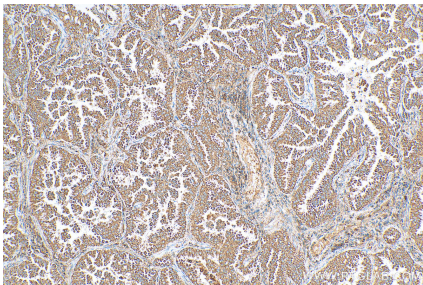
T: 4006900926

E: Proteintech-CN@ptglab.com

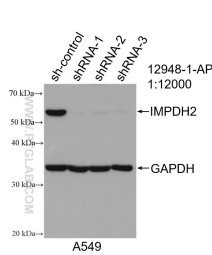
W: ptgcn.com

**This product is exclusively available under Proteintech Group brand and is not available to purchase from any other manufacturer.**

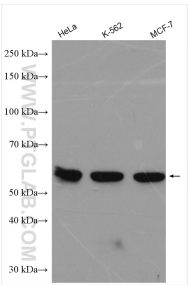
Selected Validation Data



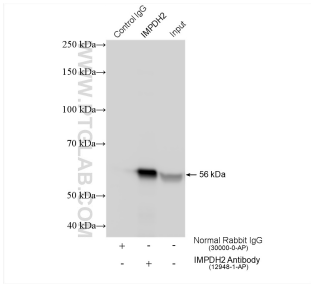
Immunohistochemical analysis of paraffin-embedded human lung cancer tissue slide using 12948-1-AP (IMPDH2 antibody) at dilution of 1:200 (under 10x lens). Heat mediated antigen retrieval with Tris-EDTA buffer (pH 9.0).



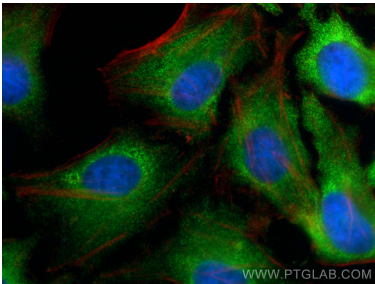
WB result of IMPDH2 antibody (12948-1-AP; 1:12000; incubated at room temperature for 1.5 hours) with sh-Control and sh-IMPDH2 transfected A549 cells.



Various lysates were subjected to SDS PAGE followed by western blot with 12948-1-AP (IMPDH2 antibody) at dilution of 1:18000 incubated at room temperature for 1.5 hours.



IP result of anti-IMPDH2 (IP:12948-1-AP, 4ug; Detection:12948-1-AP 1:20000) with HeLa cells lysate 1320 ug.



Immunofluorescent analysis of (4% PFA) fixed HeLa cells using IMPDH2 antibody (12948-1-AP) at dilution of 1:400 and CoraLite®488-Conjugated AffiniPure Goat Anti-Rabbit IgG(H+L), CL594-phalloidin (red).