

For Research Use Only

PSME2 Polyclonal antibody

Catalog Number: 12937-2-AP

3 Publications



Basic Information

Catalog Number:

12937-2-AP

Size:

550 ug/ml

Source:

Rabbit

Isotype:

IgG

Immunogen Catalog Number:

AG3986

GenBank Accession Number:

BC019885

GeneID (NCBI):

5721

UNIPROT ID:

Q9UL46

Full Name:

proteasome (prosome, macropain)
activator subunit 2 (PA28 beta)

Calculated MW:

239 aa, 27 kDa

Observed MW:

27 kDa

Purification Method:

Antigen affinity purification

Recommended Dilutions:

IP 0.5-4.0 ug for 1.0-3.0 mg of total
protein lysate
IHC 1:1000-1:4000
IF/ICC 1:200-1:800

Applications

Tested Applications:

WB, IHC, IF/ICC, IP, ELISA

Cited Applications:

WB, IHC, IF

Species Specificity:

human, mouse, rat

Cited Species:

human, mouse

Positive Controls:

IP: MCF-7 cells,

IHC: human kidney tissue,

IF/ICC: MCF-7 cells,

**Note-IHC: suggested antigen retrieval with
TE buffer pH 9.0; (*) Alternatively, antigen
retrieval may be performed with citrate
buffer pH 6.0**

Background Information

The principal function of the proteasome is targeted degradation of intracellular proteins. Activity of the 20S proteasome is controlled by regulatory complexes that bind to the ends of the cylindrical proteasome. 11S regulator (REG or PA28), is a complex of 28 kDa subunits that is thought to activate proteasomes toward the production of antigenic peptides. Human PSME1 and PSME2 genes encode the two proteasome activators PA28 alpha and beta, respectively, which have been implicated in antigen processing for loading class I MHC molecules. The PA28 activator complex enhances the generation of class I binding peptides by altering the cleavage pattern of the proteasome.

Notable Publications

Author	Pubmed ID	Journal	Application
Qing Li	36586643	Pharmacol Res	WB
Cen Wu	36583022	Front Genet	IHC
Brooke R D'Arcy	36854011	PLoS Biol	IF

Storage

Storage:

Store at -20°C. Stable for one year after shipment.

Storage Buffer:

PBS with 0.02% sodium azide and 50% glycerol pH 7.3.

Aliquoting is unnecessary for -20°C storage

For technical support and original validation data for this product please contact:

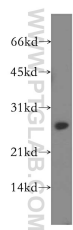
T: 4006900926

E: Proteintech-CN@ptglab.com

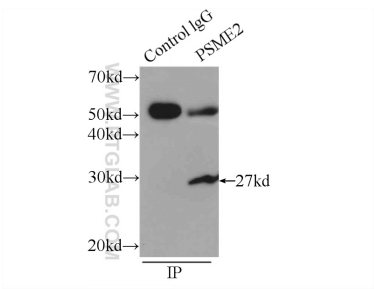
W: ptgcn.com

This product is exclusively available under Proteintech Group brand and is not available to purchase from any other manufacturer.

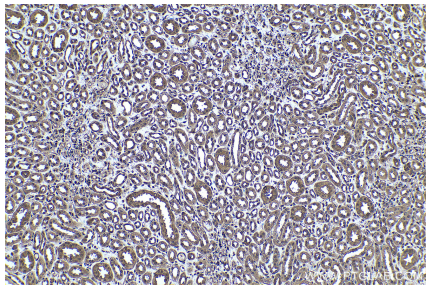
Selected Validation Data



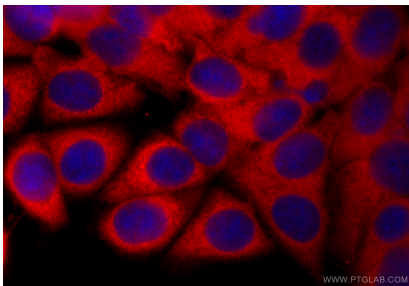
MCF7 cells were subjected to SDS PAGE followed by western blot with 12937-2-AP (PSME2 antibody) at dilution of 1:0 incubated at room temperature for 1.5 hours.



IP result of anti-PSME2 (IP:12937-2-AP, 4ug; Detection:12937-2-AP 1:500) with MCF-7 cells lysate 2000ug.



Immunohistochemical analysis of paraffin-embedded human kidney tissue slide using 12937-2-AP (PSME2 antibody) at dilution of 1:2000 (under 10x lens). Heat mediated antigen retrieval with Tris-EDTA buffer (pH 9.0).



Immunofluorescent analysis of (-20°C Methanol) fixed MCF-7 cells using PSME2 antibody (12937-2-AP) at dilution of 1:400 and CoraLite®594-Conjugated Goat Anti-Rabbit IgG(H+L) (SA00013-4).