

KCNMB1 Polyclonal antibody

Catalog Number: 12933-1-AP

Basic Information

Catalog Number:

12933-1-AP

Size:

400 ug/ml

Source:

Rabbit

Isotype:

IgG

Immunogen Catalog Number:

AG3888

GenBank Accession Number:

BC025707

GeneID (NCBI):

3779

UNIPROT ID:

Q16558

Full Name:potassium large conductance
calcium-activated channel, subfamily
M, beta member 1**Calculated MW:**

130aa, 15 kDa; 190aa, 22 kDa

Observed MW:

31 kDa

Purification Method:

Antigen affinity purification

Recommended Dilutions:

WB 1:500-1:2000

Applications

Tested Applications:

WB, ELISA

Species Specificity:

human, mouse, rat

Positive Controls:WB : mouse brain tissue, mouse skeletal muscle tissue,
rat brain tissue, rat skeletal muscle tissue

Background Information

Calcium-activated potassium channel subunit beta-1 is a protein encoded by KCNMB1 gene, also named as BK beta1, slo beta1. MaxiK channels are large conductance, voltage and calcium-sensitive potassium channels which are fundamental to the control of smooth muscle tone and neuronal excitability. MaxiK channels can be formed by 2 subunits: the pore-forming alpha subunit and the product of this gene, the modulatory beta subunit. Intracellular calcium regulates the physical association between the alpha and beta subunits. Beta subunits (beta 1-4) are highly tissue specific in their expression, with beta-1 being present predominantly on vascular smooth muscle. Endothelial cells are not known to express beta1, subunits. Beta1, is also known to be expressed in urinary bladder and in some regions of the brain. Association of the beta-1 subunit with the BK channel increases the apparent Ca²⁺ sensitivity of the channel and decreases voltage dependence. PMID 25015960

Storage

Storage:

Store at -20°C. Stable for one year after shipment.

Storage Buffer:

PBS with 0.02% sodium azide and 50% glycerol pH 7.3.

Aliquoting is unnecessary for -20°C storage

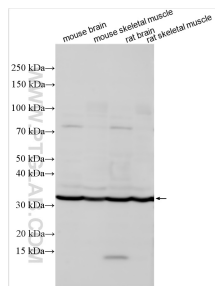
For technical support and original validation data for this product please contact:

T: 4006900926

E: Proteintech-CN@ptglab.comW: ptgcn.com

This product is exclusively available under Proteintech Group brand and is not available to purchase from any other manufacturer.

Selected Validation Data



Various lysates were subjected to SDS PAGE followed by western blot with 12933-1-AP (KCNMB1 antibody) at dilution of 1:1000 incubated at room temperature for 1.5 hours.