

# IRF6 Polyclonal antibody

Catalog Number: 12928-1-AP

## Basic Information

<b>Catalog Number:</b> 12928-1-AP	<b>GenBank Accession Number:</b> BC014852	<b>Purification Method:</b> Antigen affinity purification
<b>Size:</b> 500 µg/ml	<b>GeneID (NCBI):</b> 3664	<b>Recommended Dilutions:</b> WB 1:1000-1:4000
<b>Source:</b> Rabbit	<b>UNIPROT ID:</b> O14896	IHC 1:250-1:1000
<b>Isotype:</b> IgG	<b>Full Name:</b> interferon regulatory factor 6	IF/ICC 1:200-1:800
<b>Immunogen Catalog Number:</b> AG3623	<b>Calculated MW:</b> 467 aa, 53 kDa	
	<b>Observed MW:</b> 53-60 kDa	

## Applications

**Tested Applications:**  
WB, IHC, IF/ICC, ELISA

**Species Specificity:**  
human, mouse, rat

**Note-IHC: suggested antigen retrieval with TE buffer pH 9.0; (\*) Alternatively, antigen retrieval may be performed with citrate buffer pH 6.0**

**Positive Controls:**

**WB :** A431 cells, A549 cells, HaCaT cells

**IHC :** human lung tissue, mouse kidney tissue, human stomach cancer tissue

**IF/ICC :** HaCaT cells,

## Background Information

The interferon regulatory factor (IRF) family of genes directs the expression and activity of interferon and thus can strictly regulate innate immunity. Interferon regulatory factor 6 (IRF6) belongs to a family of nine transcription factors that share a highly conserved helix–turn–helix DNA-binding domain and a less conserved protein-binding domain. IRF6 regulates the balance between immature ectoderm differentiation and proliferation during craniofacial morphogenesis. IRF6 functions as a tumor suppressor gene in breast cancer, cervical cancer, nasopharyngeal carcinoma and so on.

## Storage

**Storage:**

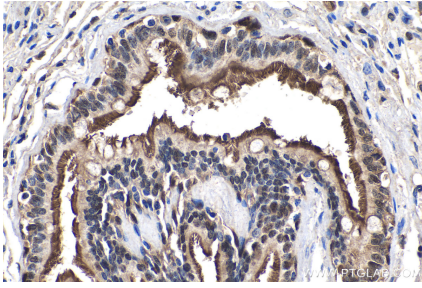
Store at -20°C. Stable for one year after shipment.

**Storage Buffer:**

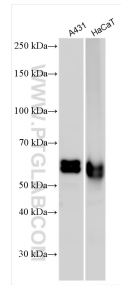
PBS with 0.02% sodium azide and 50% glycerol pH 7.3.

Aliquoting is unnecessary for -20°C storage

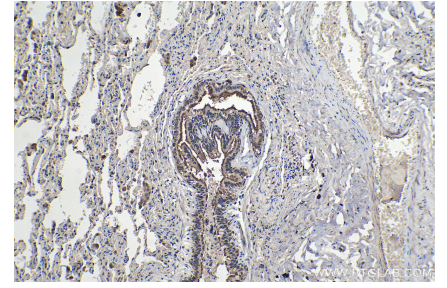
## Selected Validation Data



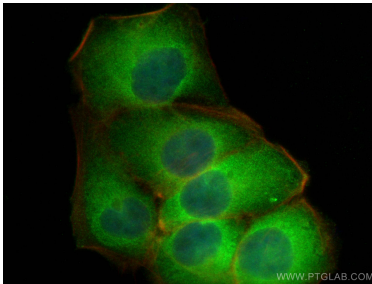
Immunohistochemical analysis of paraffin-embedded human lung tissue slide using 12928-1-AP (IRF6 antibody) at dilution of 1:500 (under 40x lens). Heat mediated antigen retrieval with Tris-EDTA buffer (pH 9.0).



Various lysates were subjected to SDS PAGE followed by western blot with 12928-1-AP (IRF6 antibody) at dilution of 1:2000 incubated at room temperature for 1.5 hours.



Immunohistochemical analysis of paraffin-embedded human lung tissue slide using 12928-1-AP (IRF6 antibody) at dilution of 1:500 (under 10x lens). Heat mediated antigen retrieval with Tris-EDTA buffer (pH 9.0).



Immunofluorescent analysis of (4% PFA) fixed HaCaT cells using IRF6 antibody (12928-1-AP) at dilution of 1:400 and CoraLite®488-Conjugated AffiniPure Goat Anti-Rabbit IgG(H+L), CL594-Phalloidin (red).