

For Research Use Only

# NCALD Polyclonal antibody

Catalog Number: 12925-1-AP

Featured Product

10 Publications



## Basic Information

**Catalog Number:**

12925-1-AP

**Size:**

800 µg/ml

**Source:**

Rabbit

**Isotype:**

IgG

**Immunogen Catalog Number:**

AG3614

**GenBank Accession Number:**

BC036098

**GeneID (NCBI):**

83988

**UNIPROT ID:**

P61601

**Full Name:**

neurocalcin delta

**Calculated MW:**

193 aa, 22 kDa

**Observed MW:**

18-22 kDa

**Purification Method:**

Antigen affinity purification

**Recommended Dilutions:**

WB 1:1000-1:4000

IHC 1:50-1:500

## Applications

**Tested Applications:**

IHC, WB, ELISA

**Cited Applications:**

WB, IF, IHC

**Species Specificity:**

human, mouse, rat

**Cited Species:**

human, mouse

**Note-IHC: suggested antigen retrieval with TE buffer pH 9.0; (\*) Alternatively, antigen retrieval may be performed with citrate buffer pH 6.0**

**Positive Controls:**

**WB :** mouse brain tissue, A549 cells, mouse cerebellum tissue, human brain tissue, human heart tissue, human cerebellum tissue, rat brain tissue

**IHC :** mouse cerebellum tissue, human brain tissue, mouse brain tissue

## Background Information

NCALD belongs to the recoverin family. And it is a member of the EF-hand calcium-binding protein superfamily. NCALD may be involved in the calcium-dependent regulation of rhodopsin phosphorylation. It plays an important role in the regulation of the neuronal signal transduction process. NCALD is a likely candidate for conferring susceptibility to diabetic nephropathy.

## Notable Publications

| Author         | Pubmed ID | Journal     | Application |
|----------------|-----------|-------------|-------------|
| Sarah M Konrad | 36444691  | Biomark Med | IHC,WB      |
| Xuefei Shi     | 27027352  | Oncotarget  | WB,IHC      |
| Shengli Pan    | 35014676  | Int J Oncol | WB,IHC      |

## Storage

**Storage:**

Store at -20°C. Stable for one year after shipment.

**Storage Buffer:**

PBS with 0.02% sodium azide and 50% glycerol pH 7.3.

Aliquoting is unnecessary for -20°C storage

For technical support and original validation data for this product please contact:

T: 4006900926

E: Proteintech-CN@ptglab.com

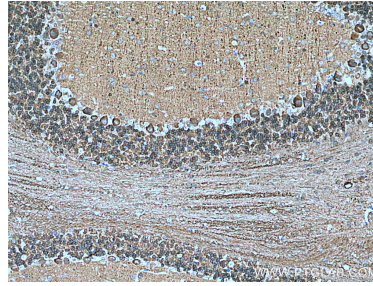
W: ptgcn.com

**This product is exclusively available under Proteintech Group brand and is not available to purchase from any other manufacturer.**

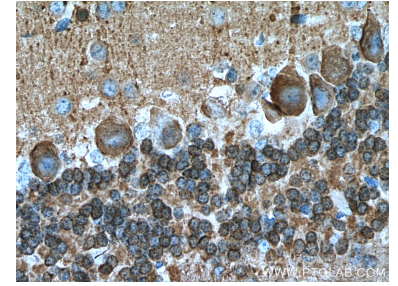
## Selected Validation Data



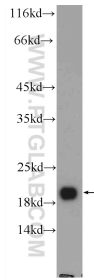
mouse brain tissue were subjected to SDS PAGE followed by western blot with 12925-1-AP (NCALD antibody) at dilution of 1:2000 incubated at room temperature for 1.5 hours.



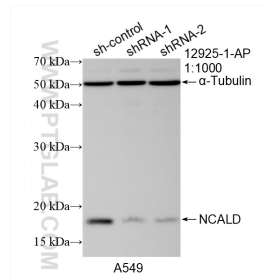
Immunohistochemical analysis of paraffin-embedded mouse cerebellum tissue slide using 12925-1-AP (NCALD antibody) at dilution of 1:200 (under 10x lens). Heat mediated antigen retrieval with Tris-EDTA buffer (pH 9.0).



Immunohistochemical analysis of paraffin-embedded mouse cerebellum tissue slide using 12925-1-AP (NCALD antibody) at dilution of 1:200 (under 40x lens). Heat mediated antigen retrieval with Tris-EDTA buffer (pH 9.0).



rat brain tissue were subjected to SDS PAGE followed by western blot with 12925-1-AP (NCALD Antibody) at dilution of 1:2000 incubated at room temperature for 1.5 hours.



WB result of NCALD antibody (12925-1-AP; 1:1000; incubated at room temperature for 1.5 hours) with sh-Control and sh-NCALD transfected A549 cells.