

## BVES Polyclonal antibody

Catalog Number: 12920-1-AP

2 Publications

## Basic Information

## Catalog Number:

12920-1-AP

## Size:

150 µg/ml

## Source:

Rabbit

## Isotype:

IgG

## Immunogen Catalog Number:

AG3593

## GenBank Accession Number:

BC034425

## GeneID (NCBI):

11149

## UNIPROT ID:

Q8NE79

## Full Name:

blood vessel epicardial substance

## Calculated MW:

360 aa, 41 kDa

## Observed MW:

41-70 kDa

## Purification Method:

Antigen affinity purification

## Recommended Dilutions:

WB 1:500-1:1000

IHC 1:20-1:200

## Applications

## Tested Applications:

IHC, WB, ELISA

## Cited Applications:

WB, IHC

## Species Specificity:

human, mouse, rat

## Cited Species:

human

**Note-IHC: suggested antigen retrieval with TE buffer pH 9.0; (\*) Alternatively, antigen retrieval may be performed with citrate buffer pH 6.0**

## Positive Controls:

WB : mouse skeletal muscle tissue,

IHC : human ovary tumor tissue,

## Background Information

BVES, also named as POP1, POPDC1 and hBVES, belongs to the popeye family. It is cell adhesion molecule involved in the establishment and/or maintenance of cell integrity. It is involved in the formation and regulation of the tight junction (TJ) paracellular permeability barrier in epithelial cells. It is also involved in striated muscle regeneration and repair and in the regulation of cell spreading. BVES is expressed in the progenitors of coronary artery smooth muscle cells as well as in differentiated smooth muscle cells.

## Notable Publications

Author	Pubmed ID	Journal	Application
Wang-Sheng Chen	37711058	Oncol Rep	WB
Luo Deng D	22109561	Pathol Oncol Res	IHC

## Storage

## Storage:

Store at -20°C. Stable for one year after shipment.

## Storage Buffer:

PBS with 0.02% sodium azide and 50% glycerol pH 7.3.

Aliquoting is unnecessary for -20°C storage

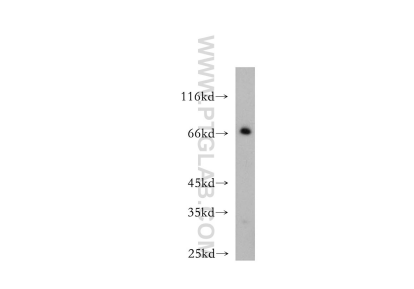
For technical support and original validation data for this product please contact:

T: 4006900926

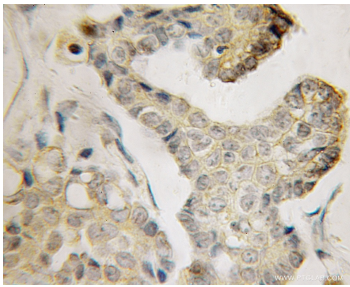
E: [Proteintech-CN@ptglab.com](mailto:Proteintech-CN@ptglab.com)W: [ptgcn.com](http://ptgcn.com)

This product is exclusively available under Proteintech Group brand and is not available to purchase from any other manufacturer.

## Selected Validation Data



mouse skeletal muscle tissue were subjected to SDS PAGE followed by western blot with 12920-1-AP (BVES antibody) at dilution of 1:500 incubated at room temperature for 1.5 hours.



Immunohistochemical analysis of paraffin-embedded human ovary tumor using 12920-1-AP (BVES antibody) at dilution of 1:100 (under 10x lens).