

For Research Use Only

PLS3 Polyclonal antibody

Catalog Number: 12917-1-AP

1 Publications



Basic Information

Catalog Number:

12917-1-AP

Size:

500 ug/ml

Source:

Rabbit

Isotype:

IgG

Immunogen Catalog Number:

AG3574

GenBank Accession Number:

BC039049

GeneID (NCBI):

5358

UNIPROT ID:

P13797

Full Name:

plastin 3 (T isoform)

Calculated MW:

630 aa, 71 kDa

Observed MW:

68 kDa

Purification Method:

Antigen affinity purification

Recommended Dilutions:

WB 1:1000-1:8000

IP 0.5-4.0 ug for 1.0-3.0 mg of total protein lysate

IHC 1:400-1:1600

IF/ICC 1:50-1:500

Applications

Tested Applications:

WB, IHC, IF/ICC, IP, ELISA

Cited Applications:

WB

Species Specificity:

human, mouse, rat

Cited Species:

mouse

Note-IHC: suggested antigen retrieval with TE buffer pH 9.0; (*) Alternatively, antigen retrieval may be performed with citrate buffer pH 6.0

Positive Controls:

WB : A431 cells, HEK-293 cells, HeLa cells, HepG2 cells, NIH/3T3 cells

IP : A431 cells,

IHC : human skin cancer tissue,

IF/ICC : A431 cells,

Background Information

PLS3, also named T-plastin and Plastin-3, is an actin-bundling protein found in intestinal microvilli, hair cell stereocilia, and fibroblast filopodia. It plays an important role in leukocyte function. L-plastin plays an important role in leukocyte function, and T-plastin is possibly involved in DNA repair. Both T- and L-plastin are implicated in several diseases, and L-plastin is considered to be a valuable marker for cancer (PMID: 15960882).

Notable Publications

Author	Pubmed ID	Journal	Application
Jasmin Morandell	34031387	Nat Commun	WB

Storage

Storage:

Store at -20°C. Stable for one year after shipment.

Storage Buffer:

PBS with 0.02% sodium azide and 50% glycerol pH 7.3.

Aliquoting is unnecessary for -20°C storage

For technical support and original validation data for this product please contact:

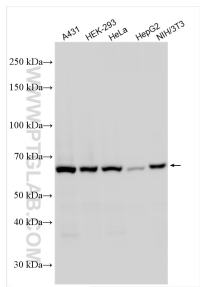
T: 4006900926

E: Proteintech-CN@ptglab.com

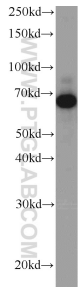
W: ptgcn.com

This product is exclusively available under Proteintech Group brand and is not available to purchase from any other manufacturer.

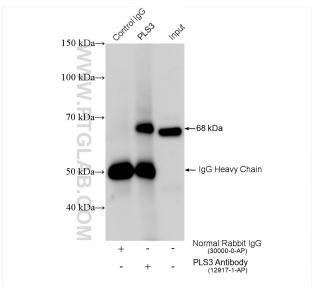
Selected Validation Data



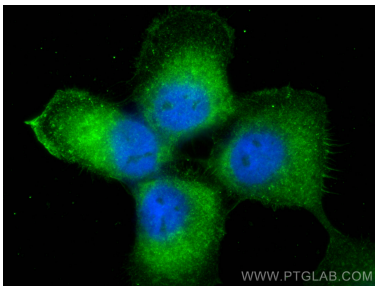
Various lysates were subjected to SDS PAGE followed by western blot with 12917-1-AP (PLS3 antibody) at dilution of 1:4000 incubated at room temperature for 1.5 hours.



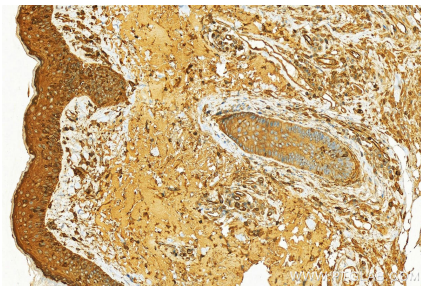
A431 cells were subjected to SDS PAGE followed by western blot with 12917-1-AP (PLS3 Antibody) at dilution of 1:600 incubated at room temperature for 1.5 hours.



IP result of anti-PLS3 (IP:12917-1-AP, 4ug; Detection:12917-1-AP 1:500) with A431 cells lysate 2640 ug.



Immunofluorescent analysis of (-20°C Ethanol) fixed A431 cells using PLS3 antibody (12917-1-AP) at dilution of 1:200 and CoraLite®488-Conjugated AffiniPure Goat Anti-Rabbit IgG(H+L).



Immunohistochemical analysis of paraffin-embedded skin cancer slide using 12917-1-AP (PLS3 antibody) at dilution of 1:800 (under 20x lens). Heat mediated antigen retrieval with Tris-EDTA buffer (pH 9.0).



Immunohistochemical analysis of paraffin-embedded skin cancer slide using 12917-1-AP (PLS3 antibody) at dilution of 1:800 (under 20x lens). Heat mediated antigen retrieval with Tris-EDTA buffer (pH 9.0).