

For Research Use Only

THADA Polyclonal antibody

Catalog Number: 12909-1-AP

Featured Product

1 Publications



Basic Information

Catalog Number:

12909-1-AP

Size:

200 ug/ml

Source:

Rabbit

Isotype:

IgG

Immunogen Catalog Number:

AG3881

GenBank Accession Number:

BC025773

GeneID (NCBI):

63892

UNIPROT ID:

Q6YHU6

Full Name:

thyroid adenoma associated

Calculated MW:

220 kDa

Observed MW:

183 kDa

Purification Method:

Antigen affinity purification

Recommended Dilutions:

WB 1:500-1:1000

IHC 1:20-1:200

IF/ICC 1:200-1:800

Applications

Tested Applications:

WB, IHC, IF/ICC, ELISA

Cited Applications:

WB, IHC, IF, IP

Species Specificity:

human, mouse, rat, hamster

Cited Species:

human, mouse

Note-IHC: suggested antigen retrieval with TE buffer pH 9.0; (*) Alternatively, antigen retrieval may be performed with citrate buffer pH 6.0

Positive Controls:

WB : A549 cells, CHO cells

IHC : human pancreas tissue, human testis tissue, mouse ovary tissue, rat ovary tissue

IF/ICC : A549 cells,

Background Information

Notable Publications

Author	Pubmed ID	Journal	Application
Chushu Li	34341130	J Immunother Cancer	WB,IHC,IF,IP

Storage

Storage:

Store at -20°C. Stable for one year after shipment.

Storage Buffer:

PBS with 0.02% sodium azide and 50% glycerol pH 7.3.

Aliquoting is unnecessary for -20°C storage

For technical support and original validation data for this product please contact:

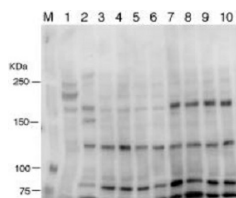
T: 4006900926

E: Proteintech-CN@ptglab.com

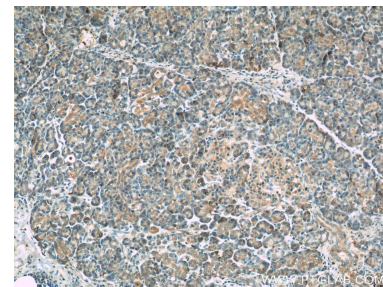
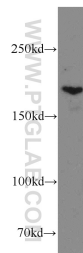
W: ptgcn.com

This product is exclusively available under Proteintech Group brand and is not available to purchase from any other manufacturer.

Selected Validation Data



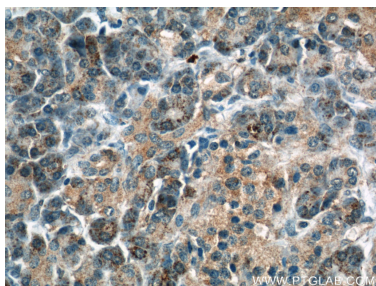
Anti-THADA (12909-1-AP) Western blot analysis. 50ug of lysate of mouse lung (lane 1), EA.hy926 cell (lane 2), CHO cell (lane 3-6), CHO cell transfected human THADA (lane 7-10), M is protein marker.



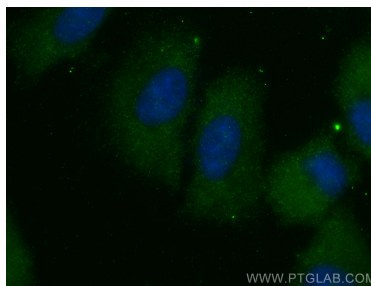
WB result of 12909-1-AP from Takashi Kobayashi.

A549 cells were subjected to SDS PAGE followed by western blot with 12909-1-AP (THADA antibody) at dilution of 1:300 incubated at room temperature for 1.5 hours.

Immunohistochemical analysis of paraffin-embedded human pancreas using 12909-1-AP (THADA antibody) at dilution of 1:50 (under 10x lens).



Immunohistochemical analysis of paraffin-embedded human pancreas using 12909-1-AP (THADA antibody) at dilution of 1:50 (under 40x lens).



Immunofluorescent analysis of (-20°C Methanol) fixed A549 cells using THADA antibody (12909-1-AP) at dilution of 1:400 and CoraLite®488-Conjugated AffiniPure Goat Anti-Rabbit IgG(H+L) (SA00013-2).