

For Research Use Only

# GSDMB Polyclonal antibody

Catalog Number: 12885-1-AP

6 Publications



## Basic Information

Catalog Number:

12885-1-AP

Size:

450 µg/ml

Source:

Rabbit

Isotype:

IgG

Immunogen Catalog Number:

AG3895

GenBank Accession Number:

BC025682

GeneID (NCBI):

55876

UNIPROT ID:

Q8TAX9

Full Name:

gasdermin B

Calculated MW:

411 aa, 47 kDa

Observed MW:

47 kDa

Purification Method:

Antigen affinity purification

Recommended Dilutions:

IHC 1:50-1:500

## Applications

Tested Applications:

IHC, ELISA

Cited Applications:

WB, IF, IHC

Species Specificity:

human

Cited Species:

human

**Note-IHC: suggested antigen retrieval with TE buffer pH 9.0; (\*) Alternatively, antigen retrieval may be performed with citrate buffer pH 6.0**

Positive Controls:

IHC : human liver cancer tissue, human colon cancer tissue

## Background Information

### Notable Publications

Author	Pubmed ID	Journal	Application
Liangmin Fu	36248876	Front Immunol	IHC, WB
Jia You	35847844	Front Oncol	IHC
Haiqing He	34326684	Int J Biol Sci	WB, IHC

## Storage

Storage:

Store at -20°C. Stable for one year after shipment.

Storage Buffer:

PBS with 0.02% sodium azide and 50% glycerol pH 7.3.

Aliquoting is unnecessary for -20°C storage

For technical support and original validation data for this product please contact:

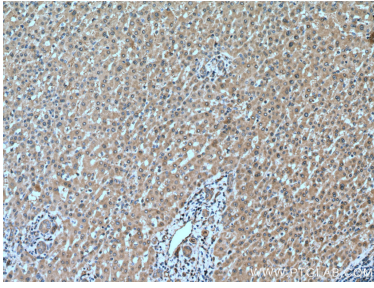
T: 4006900926

E: Proteintech-CN@ptglab.com

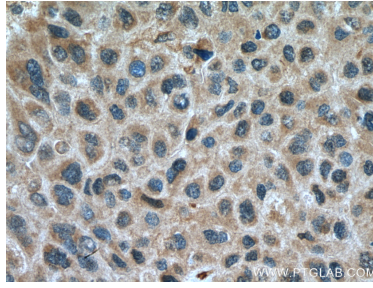
W: ptgcn.com

This product is exclusively available under Proteintech Group brand and is not available to purchase from any other manufacturer.

## Selected Validation Data



Immunohistochemical analysis of paraffin-embedded human liver cancer tissue slide using 12885-1-AP (GSDMB antibody) at dilution of 1:200 (under 10x lens). Heat mediated antigen retrieval with Tris-EDTA buffer (pH 9.0).



Immunohistochemical analysis of paraffin-embedded human liver cancer tissue slide using 12885-1-AP (GSDMB antibody) at dilution of 1:200 (under 40x lens). Heat mediated antigen retrieval with Tris-EDTA buffer (pH 9.0).