

For Research Use Only

# PPEF1 Polyclonal antibody

Catalog Number: 12875-1-AP

Featured Product



## Basic Information

**Catalog Number:**

12875-1-AP

**Size:**

300 µg/ml

**Source:**

Rabbit

**Isotype:**

IgG

**Immunogen Catalog Number:**

AG3553

**GenBank Accession Number:**

BC036026

**GeneID (NCBI):**

5475

**UNIPROT ID:**

O14829

**Full Name:**

protein phosphatase, EF-hand calcium binding domain 1

**Calculated MW:**

653 aa, 76 kDa

**Observed MW:**

69-76 kDa

**Purification Method:**

Antigen affinity purification

**Recommended Dilutions:**

WB 1:500-1:3000

IHC 1:250-1:1000

## Applications

**Tested Applications:**

IHC, WB, ELISA

**Species Specificity:**

human, mouse

**Note-IHC: suggested antigen retrieval with TE buffer pH 9.0; (\*) Alternatively, antigen retrieval may be performed with citrate buffer pH 6.0**

**Positive Controls:**

WB: A549 cells, HeLa cells, HEK-293 cells, PC-3 cells

IHC: mouse testis tissue,

## Background Information

### Storage

**Storage:**

Store at -20°C. Stable for one year after shipment.

**Storage Buffer:**

PBS with 0.02% sodium azide and 50% glycerol pH 7.3.

Aliquoting is unnecessary for -20°C storage

For technical support and original validation data for this product please contact:

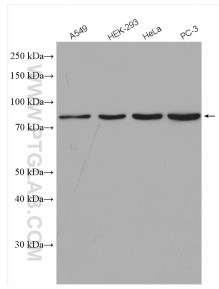
T: 4006900926

E: [Proteintech-CN@ptglab.com](mailto:Proteintech-CN@ptglab.com)

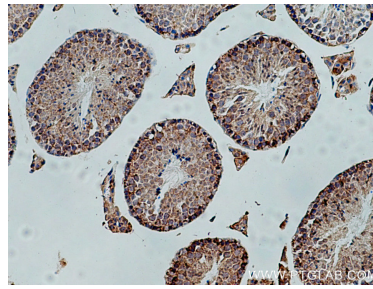
W: [ptgcn.com](http://ptgcn.com)

This product is exclusively available under Proteintech Group brand and is not available to purchase from any other manufacturer.

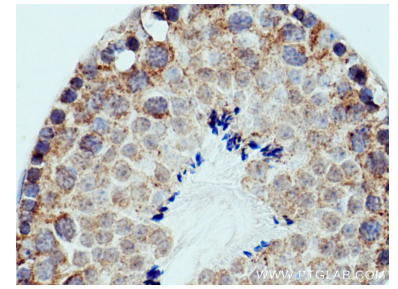
## Selected Validation Data



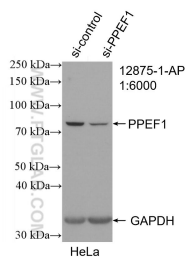
Various lysates were subjected to SDS PAGE followed by western blot with 12875-1-AP (PPEF1 antibody) at dilution of 1:1500 incubated at room temperature for 1.5 hours.



Immunohistochemical analysis of paraffin-embedded mouse testis tissue slide using 12875-1-AP (PPEF1 antibody) at dilution of 1:500 (under 10x lens). Heat mediated antigen retrieval with Tris-EDTA buffer (pH 9.0).



Immunohistochemical analysis of paraffin-embedded mouse testis tissue slide using 12875-1-AP (PPEF1 antibody) at dilution of 1:500 (under 40x lens). Heat mediated antigen retrieval with Tris-EDTA buffer (pH 9.0).



WB result of PPEF1 antibody (12875-1-AP; 1:6000; incubated at room temperature for 1.5 hours) with sh-Control and sh-PPEF1 transfected HeLa cells.