

HLF Polyclonal antibody

Catalog Number: 12870-1-AP

Basic Information

Catalog Number:

12870-1-AP

Size:

1000 µg/ml

Source:

Rabbit

Isotype:

IgG

Immunogen Catalog Number:

AG3533

GenBank Accession Number:

BC036093

GeneID (NCBI):

3131

UNIPROT ID:

Q16534

Full Name:

hepatic leukemia factor

Calculated MW:

295 aa, 33 kDa

Observed MW:

33kDa, 66 kDa

Purification Method:

Antigen affinity purification

Recommended Dilutions:

WB 1:500-1:2000

IHC 1:250-1:1000

Applications

Tested Applications:

WB, IHC, ELISA

Species Specificity:

human, mouse, rat

Note-IHC: suggested antigen retrieval with TE buffer pH 9.0; (*) Alternatively, antigen retrieval may be performed with citrate buffer pH 6.0

Positive Controls:

WB : SH-SY5Y cells, HEK-293 cells, K-562 cells, HepG2 cells, mouse liver tissue, mouse brain tissue

IHC : rat liver tissue, mouse liver tissue

Background Information

Hepatic leukemia factor (Hlf), is a novel hepatic protein of the proline and acidic amino acid-rich basic leucine zipper (bZip) family, previously studied for its role in circadian rhythm regulated neurotransmitter metabolism in the brain (PMID: 29166614). HLF is an essential regulator of HSC quiescence and that HLF deficiency leads to an exhaustion of HSCs in adult mouse BM during regeneration or following cytotoxic stress (PMID: 29262330). Hlf is able to bind DNA specifically as a homodimer or as a heterodimer with other PAR factors (PMID: 1516826). Western blot analysis detected bands 33 kDa whereas the 66 kDa could be the dimer form of Hlf.

Storage

Storage:

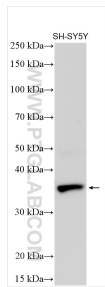
Store at -20°C. Stable for one year after shipment.

Storage Buffer:

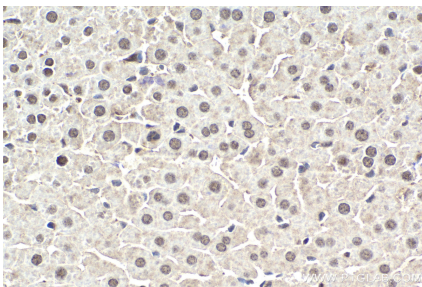
PBS with 0.02% sodium azide and 50% glycerol pH 7.3.

Aliquoting is unnecessary for -20°C storage

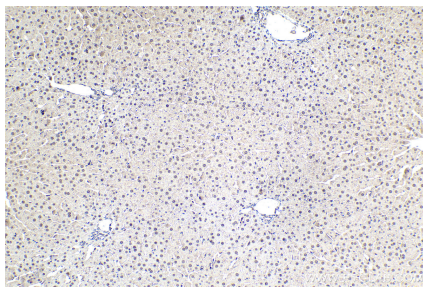
Selected Validation Data



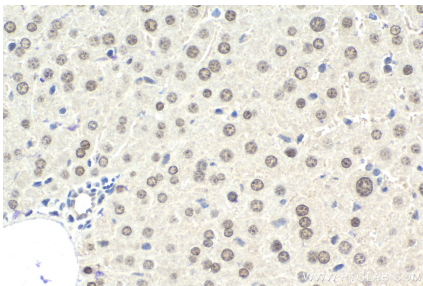
Various lysates were subjected to SDS PAGE followed by western blot with 12870-1-AP (HLF antibody) at dilution of 1:1000 incubated at room temperature for 1.5 hours.



Immunohistochemical analysis of paraffin-embedded rat liver tissue slide using 12870-1-AP (HLF antibody) at dilution of 1:500 (under 40x lens). Heat mediated antigen retrieval with Tris-EDTA buffer (pH 9.0).



Immunohistochemical analysis of paraffin-embedded rat liver tissue slide using 12870-1-AP (HLF antibody) at dilution of 1:500 (under 10x lens). Heat mediated antigen retrieval with Tris-EDTA buffer (pH 9.0).



Immunohistochemical analysis of paraffin-embedded mouse liver tissue slide using 12870-1-AP (HLF antibody) at dilution of 1:1000 (under 40x lens). Heat mediated antigen retrieval with Tris-EDTA buffer (pH 9.0).