

For Research Use Only

CD42b Polyclonal antibody

Catalog Number: 12860-1-AP

27 Publications



Basic Information

Catalog Number:

12860-1-AP

Concentration:

330 ug/ml

Source:

Rabbit

Isotype:

IgG

Immunogen Catalog Number:

AG3893

GenBank Accession Number:

BC027955

GeneID (NCBI):

2811

ENSEMBL Gene ID:

ENSG00000185245

UNIPROT ID:

P07359

Full Name:

glycoprotein Ib (platelet), alpha polypeptide

Calculated MW:

626 aa, 69 kDa

Observed MW:

145 kDa

Purification Method:

Antigen affinity purification

Recommended Dilutions:

WB 1:1000-1:8000

IHC 1:50-1:500

Applications

Tested Applications:

WB, IHC, ELISA

Cited Applications:

WB, IHC, IF

Species Specificity:

human, pig

Cited Species:

human, mouse, rat, pig

Note-IHC: suggested antigen retrieval with TE buffer pH 9.0; (*) Alternatively, antigen retrieval may be performed with citrate buffer pH 6.0

Positive Controls:

WB : Human peripheral blood platelets, pig peripheral blood leukocyte, human blood

IHC : human spleen tissue,

Background Information

GP1BA, also named as CD42b, is a 145-kDa surface membrane protein of platelets, participates in the formation of platelet plugs by binding to the A1 domain of vWF, which is already bound to the subendothelium. It has a heterodimer form which composed of GP1BA and GP1BB.

Notable Publications

Author	Pubmed ID	Journal	Application
Folnetti A Alvarez	36114323	Breast Cancer Res Treat	WB
A Blaschitz	26388607	Placenta	IHC
Hai-Jian Sun	28868583	Immunol Res	IHC

Storage

Storage:

Store at -20°C. Stable for one year after shipment.

Storage Buffer:

PBS with 0.02% sodium azide and 50% glycerol

Aliquoting is unnecessary for -20°C storage

For technical support and original validation data for this product please contact:

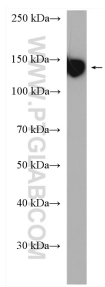
T: 4006900926

E: Proteintech-CN@ptglab.com

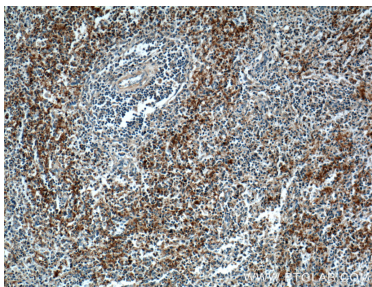
W: ptgcn.com

This product is exclusively available under Proteintech Group brand and is not available to purchase from any other manufacturer.

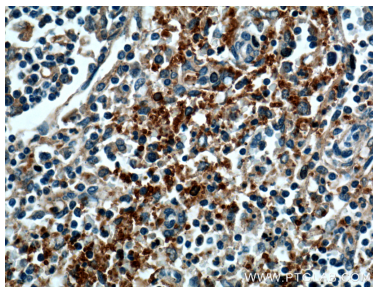
Selected Validation Data



Human peripheral blood platelets were subjected to SDS PAGE followed by western blot with 12860-1-AP (CD42b antibody) at dilution of 1:4000 incubated at room temperature for 1.5 hours.



Immunohistochemical analysis of paraffin-embedded human spleen tissue slide using 12860-1-AP (CD42b antibody at dilution of 1:200 (under 10x lens).



Immunohistochemical analysis of paraffin-embedded human spleen tissue slide using 12860-1-AP (CD42b antibody at dilution of 1:200 (under 40x lens).