

For Research Use Only

CTPS2 Polyclonal antibody

Catalog Number: 12852-1-AP

3 Publications



Basic Information

Catalog Number:

12852-1-AP

Size:

260 ug/ml

Source:

Rabbit

Isotype:

IgG

Immunogen Catalog Number:

AG3490

GenBank Accession Number:

BC034986

GeneID (NCBI):

56474

UNIPROT ID:

Q9NRF8

Full Name:

CTP synthase II

Calculated MW:

586 aa, 66 kDa

Observed MW:

66 kDa

Purification Method:

Antigen affinity purification

Recommended Dilutions:

WB 1:500-1:2000

IP 0.5-4.0 ug for 1.0-3.0 mg of total protein lysate

IHC 1:500-1:2000

Applications

Tested Applications:

WB, IHC, IP, ELISA

Cited Applications:

WB, IF

Species Specificity:

human, mouse, rat

Cited Species:

human

Note-IHC: suggested antigen retrieval with TE buffer pH 9.0; (*) Alternatively, antigen retrieval may be performed with citrate buffer pH 6.0

Positive Controls:

WB : mouse testis tissue, HeLa cells, human adrenal gland tissue

IP : HeLa cells,

IHC : human colon tissue, human prostate cancer tissue

Background Information

CTPS2 (CTP synthase 2) is also named as UTP--ammonia ligase 2 and belongs to the CTP synthase family. It catalyzes the ATP-dependent amination of UTP to CTP with either L-glutamine or ammonia as the source of nitrogen and constitutes the rate-limiting enzyme in the synthesis of cytosine nucleotides.

Notable Publications

| Author | Pubmed ID | Journal | Application |
|------------------------|-----------|-----------------------|-------------|
| S John Calise | 27343244 | J Cell Sci | IF |
| Gerson Dierley Keppeke | 26165495 | J Genet Genomics | WB |
| Wendy C Carcamo | 24411169 | Int Rev Cell Mol Biol | IF |

Storage

Storage:

Store at -20°C. Stable for one year after shipment.

Storage Buffer:

PBS with 0.02% sodium azide and 50% glycerol pH 7.3.

Aliquoting is unnecessary for -20°C storage

For technical support and original validation data for this product please contact:

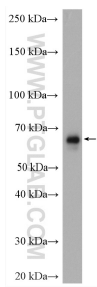
T: 4006900926

E: Proteintech-CN@ptglab.com

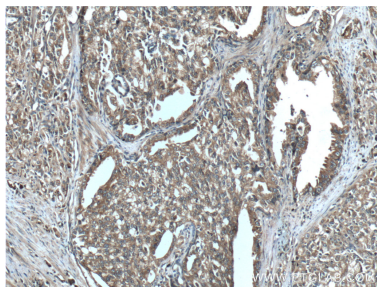
W: ptgcn.com

This product is exclusively available under Proteintech Group brand and is not available to purchase from any other manufacturer.

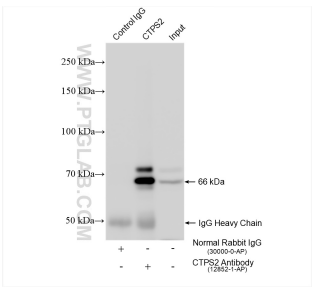
Selected Validation Data



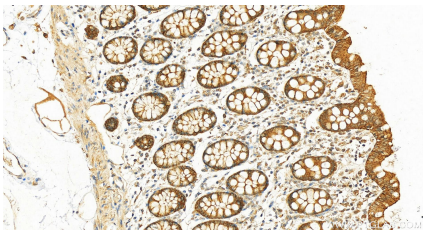
mouse testis tissue were subjected to SDS PAGE followed by western blot with 12852-1-AP (CTPS2 antibody) at dilution of 1:1000 incubated at room temperature for 1.5 hours.



Immunohistochemical analysis of paraffin-embedded human prostate cancer tissue slide using 12852-1-AP (CTPS2 Antibody) at dilution of 1:200 (under 10x lens). Heat mediated antigen retrieval with Tris-EDTA buffer (pH 9.0).



IP result of anti-CTPS2 (IP:12852-1-AP, 4ug; Detection:12852-1-AP 1:300) with HeLa cells lysate 1085 ug.



Immunohistochemical analysis of paraffin-embedded human normal colon slide using 12852-1-AP (CTPS2 antibody) at dilution of 1:1000 (under 20x lens). Heat mediated antigen retrieval with Tris-EDTA buffer (pH 9.0).