

For Research Use Only

# CENPH Polyclonal antibody

Catalog Number: 12841-1-AP **2 Publications**



## Basic Information

<b>Catalog Number:</b> 12841-1-AP	<b>GenBank Accession Number:</b> BC015355	<b>Purification Method:</b> Antigen affinity purification
<b>Size:</b> 1000 µg/ml	<b>GeneID (NCBI):</b> 64946	<b>Recommended Dilutions:</b> WB 1:1000-1:8000 IP 0.5-4.0 µg for 1.0-3.0 mg of total protein lysate
<b>Source:</b> Rabbit	<b>UNIPROT ID:</b> Q9H3R5	
<b>Isotype:</b> IgG	<b>Full Name:</b> centromere protein H	
<b>Immunogen Catalog Number:</b> AG3836	<b>Calculated MW:</b> 247 aa, 28 kDa	
	<b>Observed MW:</b> 28 kDa	

## Applications

<b>Tested Applications:</b> WB, IP, ELISA	<b>Positive Controls:</b> WB : A549 cells, HeLa cells, NIH/3T3 cells IP : HeLa cells,
<b>Cited Applications:</b> WB	
<b>Species Specificity:</b> human, mouse	
<b>Cited Species:</b> human, mouse	

## Background Information

Centromere protein H (CENPH) is a component of the active centromere complex that associates with centromeric DNA and binds spindle microtubules to the chromosomes, which is required for chromosome congression and efficiently align the chromosomes on a metaphase plate. CENPH plays a key role in assembly of kinetochore proteins, mitotic progression and chromosome segregation that may cause misaligned chromosomes and multipolar spindles. Besides, CENPH may be associated with the modulation of the cell cycle through an interaction with CENPC. It has been shown that the expression of CENPH is related to clinical application including colorectal cancer, gastric cancer, renal cell carcinoma, hepatocellular carcinoma and other poor prognosis in various solid tumors. (PMID: 26378239, 27993978, 28819418)

## Notable Publications

Author	Pubmed ID	Journal	Application
Qiao Li	37293159	Am J Cancer Res	WB
Hiba K Omairi	37186014	Neuro Oncol	WB

## Storage

**Storage:**  
Store at -20°C. Stable for one year after shipment.  
**Storage Buffer:**  
PBS with 0.02% sodium azide and 50% glycerol pH 7.3.  
Aliquoting is unnecessary for -20°C storage

For technical support and original validation data for this product please contact:

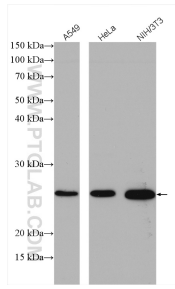
T: 4006900926

E: [Proteintech-CN@ptglab.com](mailto:Proteintech-CN@ptglab.com)

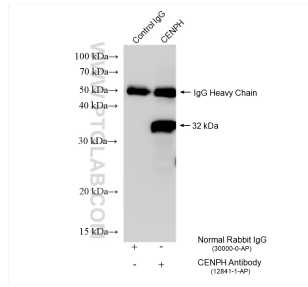
W: [ptgcn.com](http://ptgcn.com)

**This product is exclusively available under Proteintech Group brand and is not available to purchase from any other manufacturer.**

## Selected Validation Data



Various lysates were subjected to SDS PAGE followed by western blot with 12841-1-AP (CENPH antibody) at dilution of 1:5000 incubated at room temperature for 1.5 hours.



IP result of anti-CENPH (IP:12841-1-AP, 4ug; Detection:12841-1-AP 1:1000) with HeLa cells lysate 1600 ug.