

For Research Use Only

GYG1 Polyclonal antibody, PBS Only

Catalog Number:12836-1-PBS



Basic Information

Catalog Number: 12836-1-PBS	GenBank Accession Number: BC031096	Purification Method: Antigen affinity purification
Concentration: 1 mg/ml	GeneID (NCBI): 2992	
Source: Rabbit	UNIPROT ID: P46976	
Isotype: IgG	Full Name: glycogenin 1	
Immunogen Catalog Number: AG3583	Calculated MW: 350 aa, 39 kDa	
	Observed MW: 39 kDa	

Applications

Tested Applications:
WB, IHC, Indirect ELISA

Species Specificity:
human, mouse, rat

Background Information

The GYG1 gene encodes glycogenin-1, a core protein in muscle glycogen particles. GYG1 is a glycosyltransferase that forms a short glucose polymer of approximately 10 glucose residues by autoglucosylation (PMID: 25272951). Cardiomyopathy and muscle weakness associated with muscle glycogen depletion can also be caused by impaired priming of glycogen synthesis due to inactivation of muscle glycogenin (glycogenin-1) (PMID: 20357282).

Storage

Storage:
Store at -80°C.
The product is shipped with ice packs. Upon receipt, store it immediately at -80°C

Storage Buffer:
PBS only, pH7.3

For technical support and original validation data for this product please contact:

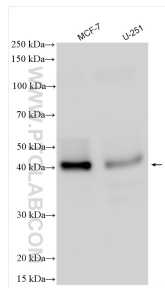
T: 4006900926

E: Proteintech-CN@ptglab.com

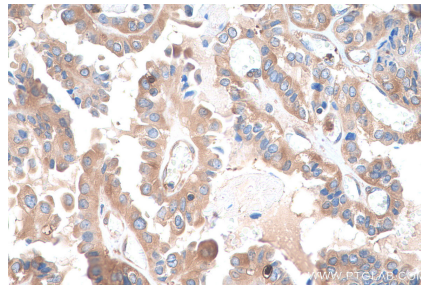
W: ptgcn.com

This product is exclusively available under Proteintech Group brand and is not available to purchase from any other manufacturer.

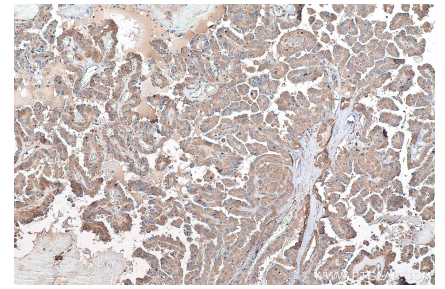
Selected Validation Data



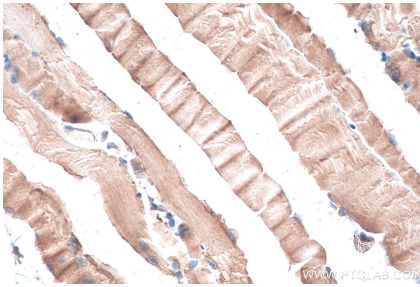
Various lysates were subjected to SDS PAGE followed by western blot with 12836-1-AP (GYG1 antibody) at dilution of 1:400 incubated at room temperature for 1.5 hours. This data was developed using the same antibody clone with 12836-1-PBS in a different storage buffer formulation.



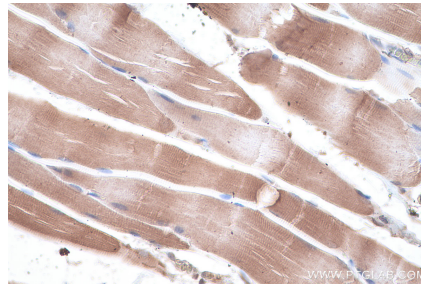
Immunohistochemical analysis of paraffin-embedded human thyroid cancer tissue slide using 12836-1-AP (GYG1 antibody) at dilution of 1:400 (under 40x lens). Heat mediated antigen retrieval with Tris-EDTA buffer (pH 9.0). This data was developed using the same antibody clone with 12836-1-PBS in a different storage buffer formulation.



Immunohistochemical analysis of paraffin-embedded human thyroid cancer tissue slide using 12836-1-AP (GYG1 antibody) at dilution of 1:400 (under 10x lens). Heat mediated antigen retrieval with Tris-EDTA buffer (pH 9.0). This data was developed using the same antibody clone with 12836-1-PBS in a different storage buffer formulation.



Immunohistochemical analysis of paraffin-embedded mouse skeletal muscle tissue slide using 12836-1-AP (GYG1 antibody) at dilution of 1:400 (under 40x lens). Heat mediated antigen retrieval with Tris-EDTA buffer (pH 9.0). This data was developed using the same antibody clone with 12836-1-PBS in a different storage buffer formulation.



Immunohistochemical analysis of paraffin-embedded rat skeletal muscle tissue slide using 12836-1-AP (GYG1 antibody) at dilution of 1:400 (under 40x lens). Heat mediated antigen retrieval with Tris-EDTA buffer (pH 9.0). This data was developed using the same antibody clone with 12836-1-PBS in a different storage buffer formulation.