

For Research Use Only

SUPV3L1 Polyclonal antibody

Catalog Number: 12826-1-AP

2 Publications



Basic Information

Catalog Number:

12826-1-AP

Size:

800 ug/ml

Source:

Rabbit

Isotype:

IgG

Immunogen Catalog Number:

AG3542

GenBank Accession Number:

BC036112

GeneID (NCBI):

6832

UNIPROT ID:

Q8IYB8

Full Name:

suppressor of var1, 3-like 1 (S. cerevisiae)

Calculated MW:

786 aa, 88 kDa

Observed MW:

70-80 kDa

Purification Method:

Antigen affinity purification

Recommended Dilutions:

WB 1:2000-1:10000

IP 0.5-4.0 ug for 1.0-3.0 mg of total protein lysate

IHC 1:250-1:1000

IF/ICC 1:50-1:500

Applications

Tested Applications:

WB, IHC, IF/ICC, IP, ELISA

Cited Applications:

WB

Species Specificity:

human, mouse, rat

Cited Species:

human

Note-IHC: suggested antigen retrieval with TE buffer pH 9.0; (*) Alternatively, antigen retrieval may be performed with citrate buffer pH 6.0

Positive Controls:

WB : HEK-293 cells, PC-3 cells, HeLa cells

IP : HeLa cells,

IHC : human stomach cancer tissue,

IF/ICC : HeLa cells,

Background Information

SUPV3L1 is a major helicase player in mitochondrial RNA metabolism. It is involved in the degradation of non-coding mitochondrial transcripts (MT-ncRNA) and tRNA-like molecules (PMID: 29967381).

Notable Publications

Author	Pubmed ID	Journal	Application
Selma L van Esveld	35023579	J Inherit Metab Dis	WB
Johannes Schneider	38552867	Biochimie	WB

Storage

Storage:

Store at -20°C. Stable for one year after shipment.

Storage Buffer:

PBS with 0.02% sodium azide and 50% glycerol pH 7.3.

Aliquoting is unnecessary for -20°C storage

For technical support and original validation data for this product please contact:

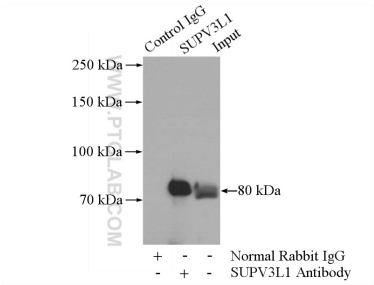
T: 4006900926

E: Proteintech-CN@ptglab.com

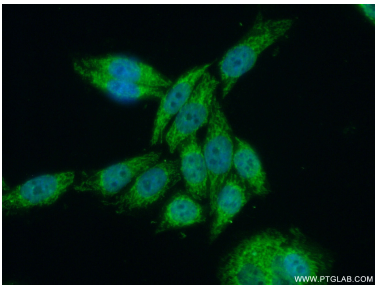
W: ptgcn.com

This product is exclusively available under Proteintech Group brand and is not available to purchase from any other manufacturer.

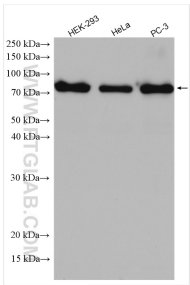
Selected Validation Data



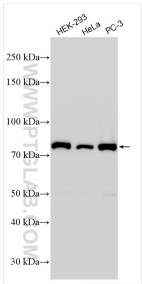
IP result of anti-SUPV3L1 (IP:12826-1-AP, 4ug; Detection:12826-1-AP 1:300) with HeLa cells lysate 1200ug.



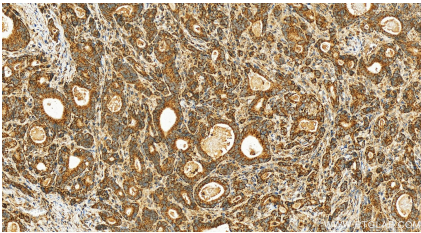
Immunofluorescent analysis of (10% Formaldehyde) fixed HeLa cells using 12826-1-AP (SUPV3L1 antibody) at dilution of 1:50 and Alexa Fluor 488-conjugated AffiniPure Goat Anti-Rabbit IgG(H+L).



Various lysates were subjected to SDS PAGE followed by western blot with 12826-1-AP (SUPV3L1 antibody) at dilution of 1:800 incubated at room temperature for 1.5 hours.



Various lysates were subjected to SDS PAGE followed by western blot with 12826-1-AP (SUPV3L1 antibody) at dilution of 1:5000 incubated at room temperature for 1.5 hours.



Immunohistochemical analysis of paraffin-embedded human stomach cancer tissue slide using 12826-1-AP (SUPV3L1 antibody) at dilution of 1:500 (under 20x lens). Heat mediated antigen retrieval with Tris-EDTA buffer (pH 9.0).