

For Research Use Only

# SLC20A2 Polyclonal antibody, PBS Only

Catalog Number: 12820-1-PBS

Featured Product



## Basic Information

**Catalog Number:**

12820-1-PBS

**Size:**

1 mg/ml

**Source:**

Rabbit

**Isotype:**

IgG

**Immunogen Catalog Number:**

AG3469

**GenBank Accession Number:**

BC028600

**GeneID (NCBI):**

6575

**UNIPROT ID:**

Q08357

**Full Name:**

solute carrier family 20 (phosphate transporter), member 2

**Calculated MW:**

652 aa, 70 kDa

**Observed MW:**

68-70 kDa

**Purification Method:**

Antigen affinity purification

## Applications

**Tested Applications:**

WB, IHC, IF-P, IP, Indirect ELISA

**Species Specificity:**

human, mouse

## Background Information

SLC20A2 (also known as PiT2) is a sodium (Na)-phosphate (Pi) co-transporter that belongs to the SLC20 family. SLC20A2 is highly expressed in the central nervous system and controls hippocampal-dependent learning and memory (PMID: 38195526). SLC20A2 is the major causative gene for primary familial brain calcification (PFBC), a rare neurological disease characterized by widespread cognitive impairment.

## Storage

**Storage:**

Store at -80°C.

**The product is shipped with ice packs. Upon receipt, store it immediately at -80°C**

**Storage Buffer:**

PBS Only

For technical support and original validation data for this product please contact:

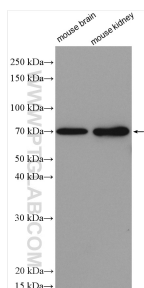
T: 4006900926

E: Proteintech-CN@ptglab.com

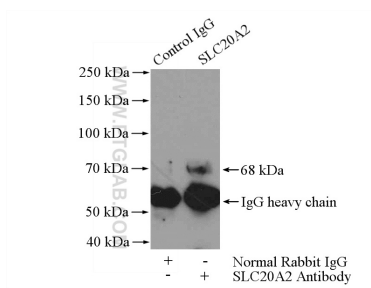
W: ptgcn.com

**This product is exclusively available under Proteintech Group brand and is not available to purchase from any other manufacturer.**

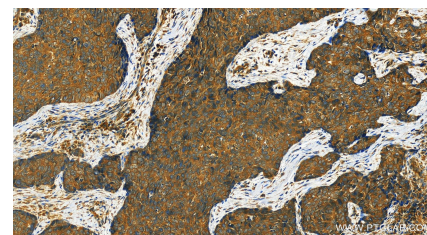
## Selected Validation Data



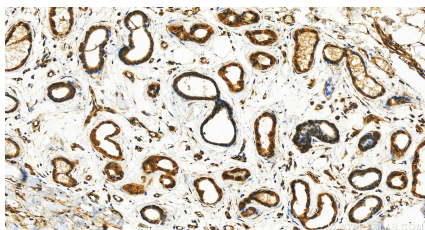
Various lysates were subjected to SDS PAGE followed by western blot with 12820-1-AP (SLC20A2 antibody) at dilution of 1:600 incubated at room temperature for 1.5 hours. This data was developed using the same antibody clone with 12820-1-PBS in a different storage buffer formulation.



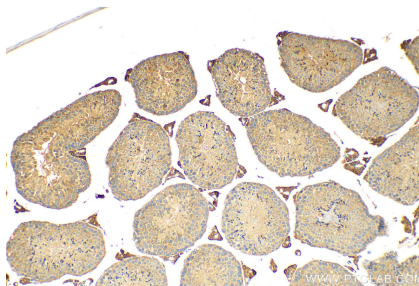
IP result of anti-SLC20A2 (IP:12820-1-AP, 4ug; Detection:12820-1-AP 1:400) with COLO 320 cells lysate 2400ug. This data was developed using the same antibody clone with 12820-1-PBS in a different storage buffer formulation.



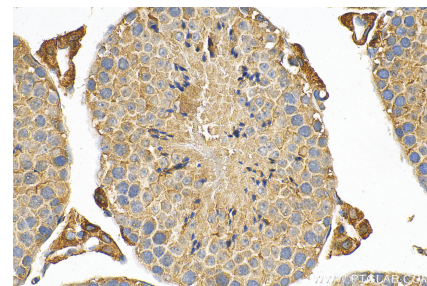
Immunohistochemical analysis of paraffin-embedded human Bowen disease slide using 12820-1-AP (SLC20A2 antibody) at dilution of 1:200 (under 20x lens). Heat mediated antigen retrieval with Tris-EDTA buffer (pH 9.0). This data was developed using the same antibody clone with 12820-1-PBS in a different storage buffer formulation.



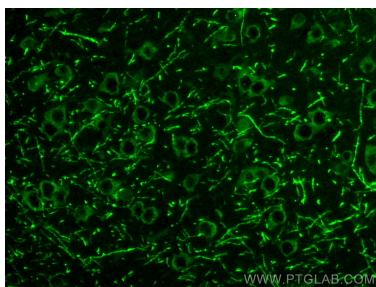
Immunohistochemical analysis of paraffin-embedded human Bowen disease slide using 12820-1-AP (SLC20A2 antibody) at dilution of 1:200 (under 20x lens). Heat mediated antigen retrieval with Tris-EDTA buffer (pH 9.0). This data was developed using the same antibody clone with 12820-1-PBS in a different storage buffer formulation.



Immunohistochemical analysis of paraffin-embedded mouse testis tissue slide using 12820-1-AP (SLC20A2 antibody) at dilution of 1:400 (under 10x lens). Heat mediated antigen retrieval with Tris-EDTA buffer (pH 9.0). This data was developed using the same antibody clone with 12820-1-PBS in a different storage buffer formulation.



Immunohistochemical analysis of paraffin-embedded mouse testis tissue slide using 12820-1-AP (SLC20A2 antibody) at dilution of 1:400 (under 40x lens). Heat mediated antigen retrieval with Tris-EDTA buffer (pH 9.0). This data was developed using the same antibody clone with 12820-1-PBS in a different storage buffer formulation.



Immunofluorescent analysis of (4% PFA) fixed paraffin-embedded mouse brain tissue using SLC20A2 antibody (12820-1-AP) at dilution of 1:200 and Multi-rAb CoraLite® Plus 488-Goat Anti-Rabbit Recombinant Secondary Antibody (H+L) (RGAR002). Heat mediated antigen retrieval with Tris-EDTA buffer (pH 9.0). This data was developed using the same antibody clone with 12820-1-PBS in a different storage buffer formulation.