

For Research Use Only

SLC20A2 Polyclonal antibody

Catalog Number: 12820-1-AP **6 Publications**



Basic Information

Catalog Number:

12820-1-AP

Size:

600 µg/ml

Source:

Rabbit

Isotype:

IgG

Immunogen Catalog Number:

AG3469

GenBank Accession Number:

BC028600

GeneID (NCBI):

6575

UNIPROT ID:

Q08357

Full Name:

solute carrier family 20 (phosphate transporter), member 2

Calculated MW:

652 aa, 70 kDa

Observed MW:

68-70 kDa

Purification Method:

Antigen affinity purification

Recommended Dilutions:

WB 1:500-1:1000

IP 0.5-4.0 µg for 1.0-3.0 mg of total protein lysate

Applications

Tested Applications:

IP, WB, ELISA

Cited Applications:

WB, IF

Species Specificity:

human, mouse

Cited Species:

human, mouse

Positive Controls:

WB: mouse brain tissue, COLO 320 cells, mouse kidney tissue

IP: COLO 320 cells,

Background Information

Notable Publications

Author	Pubmed ID	Journal	Application
Toshimi Michigami	35577326	Bone	WB
Nina Bon	29233890	J Biol Chem	WB
Katalin Éva Sikura	31017307	Br J Pharmacol	WB

Storage

Storage:

Store at -20°C. Stable for one year after shipment.

Storage Buffer:

PBS with 0.02% sodium azide and 50% glycerol pH 7.3.

Aliquoting is unnecessary for -20°C storage

For technical support and original validation data for this product please contact:

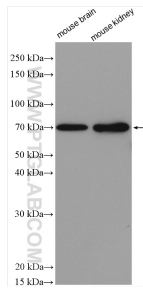
T: 4006900926

E: Proteintech-CN@ptglab.com

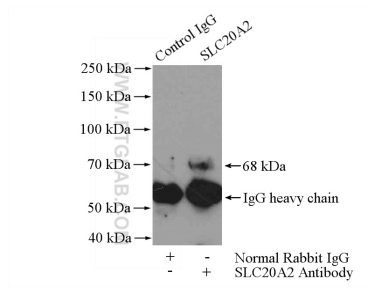
W: ptgcn.com

This product is exclusively available under Proteintech Group brand and is not available to purchase from any other manufacturer.

Selected Validation Data



Various lysates were subjected to SDS PAGE followed by western blot with 12820-1-AP (SLC20A2 antibody) at dilution of 1:600 incubated at room temperature for 1.5 hours.



IP result of anti-SLC20A2 (IP:12820-1-AP, 4ug; Detection:12820-1-AP 1:400) with COLO 320 cells lysate 2400ug.