

For Research Use Only

# GATM Polyclonal antibody

Catalog Number: 12801-1-AP **8 Publications**



## Basic Information

<b>Catalog Number:</b> 12801-1-AP	<b>GenBank Accession Number:</b> BC004141	<b>Purification Method:</b> Antigen affinity purification
<b>Size:</b> 1200 µg/ml	<b>GeneID (NCBI):</b> 2628	<b>Recommended Dilutions:</b> WB 1:500-1:3000 IHC 1:20-1:200
<b>Source:</b> Rabbit	<b>UNIPROT ID:</b> P50440	
<b>Isotype:</b> IgG	<b>Full Name:</b> glycine amidinotransferase (L-arginine:glycine amidinotransferase)	
<b>Immunogen Catalog Number:</b> AG3754	<b>Calculated MW:</b> 423 aa, 48 kDa	
	<b>Observed MW:</b> 48 kDa	

## Applications

<b>Tested Applications:</b> IHC, WB, ELISA	<b>Positive Controls:</b>
<b>Cited Applications:</b> WB, IF, IHC	WB : mouse kidney tissue, human kidney tissue, rat kidney tissue, rat pancreas tissue
<b>Species Specificity:</b> human, mouse, rat	IHC : human pancreas cancer tissue,
<b>Cited Species:</b> human, mouse	

**Note-IHC: suggested antigen retrieval with TE buffer pH 9.0; (\*) Alternatively, antigen retrieval may be performed with citrate buffer pH 6.0**

## Background Information

GATM, also known as AGAT, produces ornithine and guanidinoacetate (GAA) from arginine and glycine, and is a key enzyme for creatine synthesis. GATM deficiency in early infancy causes neurodevelopmental delay. GATM is predominantly expressed in kidney and pancreas in adults. Decrease of GATM proteins was observed in proximal tubule damage cases, which links GATM as a general marker for proximal tubule damage. Alternative splicing of GATM generates three isoforms with molecular weights between 44 kDa to 48 kDa.

## Notable Publications

Author	Pubmed ID	Journal	Application
Qiong Lai	31972362	Biomed Pharmacother	WB, IHC
Sho Nishikawa	31914311	J Agric Food Chem	WB
Ali Sasani	31853708	Amino Acids	WB

## Storage

**Storage:**  
Store at -20°C. Stable for one year after shipment.  
**Storage Buffer:**  
PBS with 0.02% sodium azide and 50% glycerol pH 7.3.  
Aliquoting is unnecessary for -20°C storage

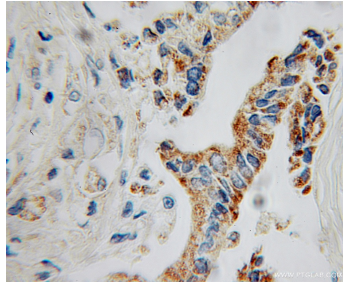
For technical support and original validation data for this product please contact:  
T: 4006900926 E: Proteintech-CN@ptglab.com W: ptgcn.com

**This product is exclusively available under Proteintech Group brand and is not available to purchase from any other manufacturer.**

## Selected Validation Data



mouse kidney tissue were subjected to SDS PAGE followed by western blot with 12801-1-AP (GATM antibody) at dilution of 1:300 incubated at room temperature for 1.5 hours.



Immunohistochemical analysis of paraffin-embedded human pancreas cancer using 12801-1-AP (GATM antibody) at dilution of 1:100 (under 10x lens).