

For Research Use Only

# Centrin 1 Polyclonal antibody

Catalog Number: 12794-1-AP **41 Publications**



## Basic Information

<b>Catalog Number:</b> 12794-1-AP	<b>GenBank Accession Number:</b> BC029515	<b>Purification Method:</b> Antigen affinity purification
<b>Size:</b> 850 ug/ml	<b>GeneID (NCBI):</b> 1068	<b>Recommended Dilutions:</b> WB 1:500-1:2000 IF/ICC 1:200-1:800
<b>Source:</b> Rabbit	<b>UNIPROT ID:</b> Q12798	
<b>Isotype:</b> IgG	<b>Full Name:</b> centrin, EF-hand protein, 1	
<b>Immunogen Catalog Number:</b> AG3529	<b>Calculated MW:</b> 172 aa, 20 kDa	
	<b>Observed MW:</b> 20 kDa	

## Applications

<b>Tested Applications:</b> WB, IF/ICC, ELISA	<b>Positive Controls:</b> WB : HL-60 cells, human heart tissue IF/ICC : hTERT-RPE1 cells, HeLa cells
<b>Cited Applications:</b> WB, IF	
<b>Species Specificity:</b> human	
<b>Cited Species:</b> human, mouse, zebrafish	

## Background Information

EF-hand type Ca<sup>2+</sup>-binding proteins consists of several family members, including Centrin-1, Centrin-2 and Centrin-3. The Centrin proteins are ubiquitously expressed cytoskeletal components that show increased expression during cell differentiation. Centrin-1 plays important roles in the determination of centrosome position and segregation, and in the process of microtubule severing. Centrin-1 is localized to the centrosome of interphase cells, and redistributes to the region of the spindle poles during mitosis, reflecting the dynamic behavior of the centrosome during the cell cycle.

## Notable Publications

Author	Pubmed ID	Journal	Application
Ivan Rosa E Silva	34499853	Structure	IF
ShuweiXie	30188792	Mol Biol Cell	IF
Zhenguang Ying	36280838	BMC Biol	IF

## Storage

**Storage:**  
Store at -20°C. Stable for one year after shipment.  
**Storage Buffer:**  
PBS with 0.02% sodium azide and 50% glycerol pH 7.3.  
Aliquoting is unnecessary for -20°C storage

For technical support and original validation data for this product please contact:

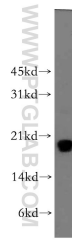
T: 4006900926

E: [Proteintech-CN@ptglab.com](mailto:Proteintech-CN@ptglab.com)

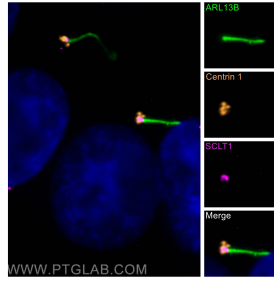
W: [ptgcn.com](http://ptgcn.com)

**This product is exclusively available under Proteintech Group brand and is not available to purchase from any other manufacturer.**

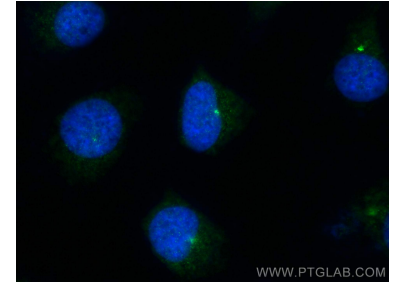
## Selected Validation Data



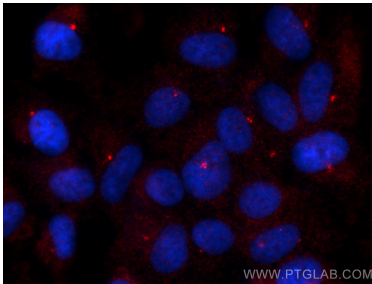
HL-60 cells were subjected to SDS PAGE followed by western blot with 12794-1-AP (Centrin 1 antibody) at dilution of 1:300 incubated at room temperature for 1.5 hours.



Immunofluorescent analysis of (-20°C Methanol) fixed hTERT-RPE1 cells using Centrin 1 antibody (12794-1-AP) at dilution of 1:50 and Cy3-conjugated Affinipure Goat Anti-Rabbit IgG(H+L), CoraLite®488 ARL13B antibody (CL488-17711, green), SCLT1 antibody (14875-1-AP, Magenta).



Immunofluorescent analysis of (-20°C Methanol) fixed HeLa cells using Centrin 1 antibody (12794-1-AP) at dilution of 1:200 and CoraLite®488-Conjugated Affinipure Goat Anti-Rabbit IgG(H+L).



Immunofluorescent analysis of (-20°C Methanol) fixed hTERT-RPE1 cells using Centrin 1 antibody (12794-1-AP) at dilution of 1:400 and CoraLite®594-Conjugated Affinipure Goat Anti-Rabbit IgG(H+L) (SA00013-4).