

For Research Use Only

CBLB Polyclonal antibody

Catalog Number: 12781-1-AP **13 Publications**



Basic Information

Catalog Number:

12781-1-AP

Size:

750 µg/ml

Source:

Rabbit

Isotype:

IgG

Immunogen Catalog Number:

AG3491

GenBank Accession Number:

BC032851

GeneID (NCBI):

868

UNIPROT ID:

Q13191

Full Name:

Cas-Br-M (murine) ecotropic retroviral transforming sequence b

Calculated MW:

982 aa, 109 kDa

Observed MW:

110 kDa

Purification Method:

Antigen affinity purification

Recommended Dilutions:

WB 1:500-1:2000

IP 0.5-4.0 µg for 1.0-3.0 mg of total protein lysate

IHC 1:50-1:500

IF 1:50-1:500

Applications

Tested Applications:

IF/ICC, IHC, IP, WB, ELISA

Cited Applications:

WB, IP, IF, FC, IHC, CoIP

Species Specificity:

human, mouse, rat

Cited Species:

human, rat, mouse

Note-IHC: suggested antigen retrieval with TE buffer pH 9.0; (*) Alternatively, antigen retrieval may be performed with citrate buffer pH 6.0

Positive Controls:

WB : HEK-293 cells, A549 cells

IP : HEK-293 cells,

IHC : mouse colon tissue, human kidney tissue, human placenta tissue, human testis tissue, human spleen tissue, human lung tissue

IF : A431 cells,

Background Information

CBLB(E3 ubiquitin-protein ligase CBL-B) is also named as RNF56 and plays a necessary role to prevent the inappropriate activation of NF-B in response to lipopolysaccharide and to polymicrobial sepsis. CBLB can be phosphorylated on tyrosine and serine residues upon TCR or BCR activation, and upon various types of cell stimulation. It also has a crucial role in the prevention of chronic inflammation and autoimmunity. This protein has 3 isoforms produced by alternative splicing.

Notable Publications

Author	Pubmed ID	Journal	Application
Klarissa Hanja Stürner	25261476	J Immunol	FC
Ze-Qing Pu	33124187	J Cell Mol Med	WB,IF
Ke Chen	33116705	Diabetes Metab Syndr Obes	IHC,WB

Storage

Storage:

Store at -20°C. Stable for one year after shipment.

Storage Buffer:

PBS with 0.02% sodium azide and 50% glycerol pH 7.3.

Aliquoting is unnecessary for -20°C storage

For technical support and original validation data for this product please contact:

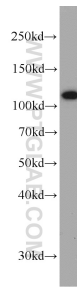
T: 4006900926

E: Proteintech-CN@ptglab.com

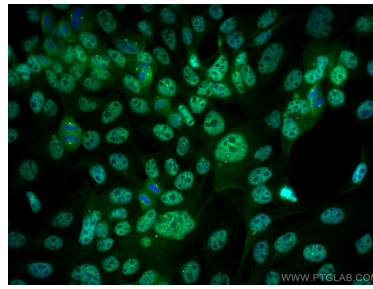
W: ptgcn.com

This product is exclusively available under Proteintech Group brand and is not available to purchase from any other manufacturer.

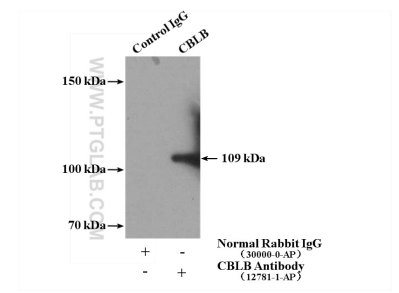
Selected Validation Data



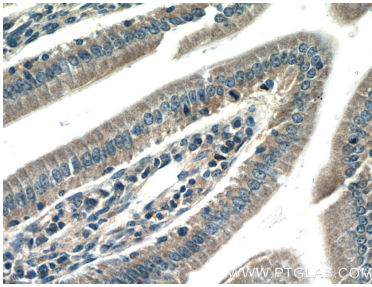
HEK-293 cells were subjected to SDS PAGE followed by western blot with 12781-1-AP (CBLB antibody) at dilution of 1:500 incubated at room temperature for 1.5 hours.



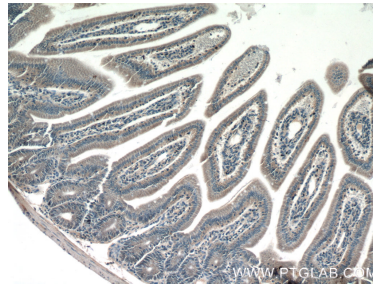
Immunofluorescent analysis of (4% PFA) fixed A431 cells using CBLB antibody (12781-1-AP) at dilution of 1:200 and CoraLite@488-Conjugated AffiniPure Goat Anti-Rabbit IgG(H+L).



IP result of anti-CBLB (IP:12781-1-AP, 4ug; Detection:12781-1-AP 1:300) with HEK-293 cells lysate 3680ug.



Immunohistochemical analysis of paraffin-embedded mouse colon tissue slide using 12781-1-AP (CBLB antibody) at dilution of 1:50 (under 40x lens)..



Immunohistochemical analysis of paraffin-embedded mouse colon tissue slide using 12781-1-AP (CBLB antibody) at dilution of 1:50 (under 10x lens)..