

For Research Use Only

# MYCBPAP Polyclonal antibody, PBS Only

Catalog Number:12763-1-PBS



## Basic Information

<b>Catalog Number:</b> 12763-1-PBS	<b>GenBank Accession Number:</b> BC028393	<b>Purification Method:</b> Antigen affinity purification
<b>Size:</b> 1 mg/ml	<b>GeneID (NCBI):</b> 84073	
<b>Source:</b> Rabbit	<b>UNIPROT ID:</b> Q8TBZ2	
<b>Isotype:</b> IgG	<b>Full Name:</b> MYCBP associated protein	
<b>Immunogen Catalog Number:</b> AG3419	<b>Calculated MW:</b> 947 aa, 108 kDa	
	<b>Observed MW:</b> 108 kDa	

## Applications

**Tested Applications:**  
WB, IHC, IF/ICC, Indirect ELISA

**Species Specificity:**  
human

## Background Information

MYCBPAP, or MYCBP associated protein, is a protein encoded by the human MYCBPAP gene. It is primarily expressed in the testis and is involved in spermatogenesis, the process of forming sperm cells. The protein may also play a role in synaptic processes, which are essential for neuronal signaling. MYCBPAP is predicted to be an intracellular protein with molecular functions including clathrin binding, phospholipid binding, and protein binding. It is associated with biological processes such as cell differentiation, chemical synaptic transmission, endocytosis, and spermatogenesis.

## Storage

**Storage:**  
Store at -80°C.  
**The product is shipped with ice packs. Upon receipt, store it immediately at -80°C**

**Storage Buffer:**  
PBS Only

For technical support and original validation data for this product please contact:

T: 4006900926

E: [Proteintech-CN@ptglab.com](mailto:Proteintech-CN@ptglab.com)

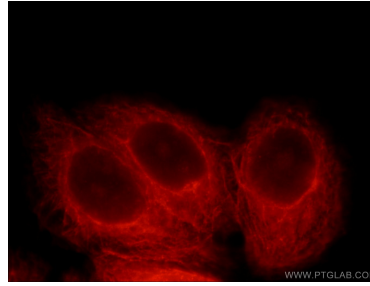
W: [ptgcn.com](http://ptgcn.com)

**This product is exclusively available under Proteintech Group brand and is not available to purchase from any other manufacturer.**

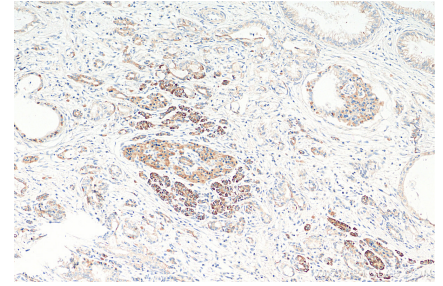
## Selected Validation Data



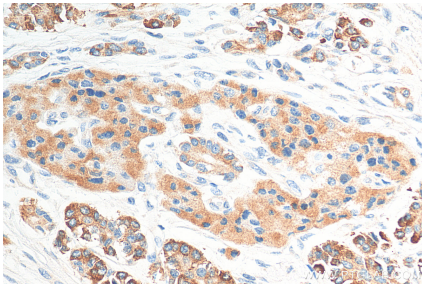
human placenta tissue were subjected to SDS PAGE followed by western blot with 12763-1-AP (MYCBPAP antibody) at dilution of 1:300 incubated at room temperature for 1.5 hours. This data was developed using the same antibody clone with 12763-1-PBS in a different storage buffer formulation.



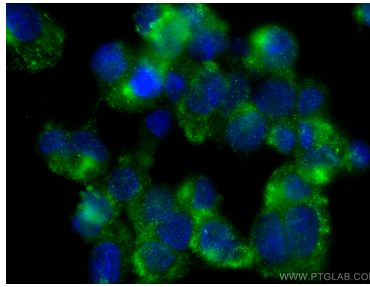
Immunofluorescent analysis of HepG2 cells, using MYCBPAP antibody 12763-1-AP at 1:25 dilution and Rhodamine-labeled goat anti-rabbit IgG (red). This data was developed using the same antibody clone with 12763-1-PBS in a different storage buffer formulation.



Immunohistochemical analysis of paraffin-embedded human pancreas cancer tissue slide using 12763-1-AP (MYCBPAP antibody) at dilution of 1:200 (under 10x lens). Heat mediated antigen retrieval with Tris-EDTA buffer (pH 9.0). This data was developed using the same antibody clone with 12763-1-PBS in a different storage buffer formulation.



Immunohistochemical analysis of paraffin-embedded human pancreas cancer tissue slide using 12763-1-AP (MYCBPAP antibody) at dilution of 1:200 (under 40x lens). Heat mediated antigen retrieval with Tris-EDTA buffer (pH 9.0). This data was developed using the same antibody clone with 12763-1-PBS in a different storage buffer formulation.



Immunofluorescent analysis of (-20°C Methanol) fixed HUVEC cells using MYCBPAP antibody (12763-1-AP) at dilution of 1:400 and Coralite® 488-Conjugated AffiniPure Goat Anti-Rabbit IgG(H+L) (SA00013-2). This data was developed using the same antibody clone with 12763-1-PBS in a different storage buffer formulation.