

For Research Use Only

# KIF1C Polyclonal antibody

Catalog Number: 12760-1-AP

Featured Product

3 Publications



## Basic Information

Catalog Number:

12760-1-AP

Size:

400 µg/ml

Source:

Rabbit

Isotype:

IgG

Immunogen Catalog Number:

AG3500

GenBank Accession Number:

BC034993

GeneID (NCBI):

10749

UNIPROT ID:

O43896

Full Name:

kinesin family member 1C

Calculated MW:

1103 aa, 123 kDa

Observed MW:

135-140 kDa

Purification Method:

Antigen affinity purification

Recommended Dilutions:

WB 1:500-1:2000

IP 0.5-4.0 µg for 1.0-3.0 mg of total protein lysate

IHC 1:50-1:500

## Applications

Tested Applications:

IHC, IP, WB, ELISA

Cited Applications:

WB, IF, IP

Species Specificity:

human, mouse, rat

Cited Species:

human, mouse

**Note-IHC: suggested antigen retrieval with TE buffer pH 9.0; (\*) Alternatively, antigen retrieval may be performed with citrate buffer pH 6.0**

Positive Controls:

WB : mouse heart tissue, A549 cells, HeLa cells

IP : mouse heart tissue,

IHC : human gliomas tissue,

## Background Information

### Notable Publications

Author	Pubmed ID	Journal	Application
Xavier Pichon	34493599	RNA	WB
Konstadinos Moissoglou	38979199	bioRxiv	
Ryan P Hildebrandt	37296096	Nat Commun	WB,IF,IP

## Storage

Storage:

Store at -20°C. Stable for one year after shipment.

Storage Buffer:

PBS with 0.02% sodium azide and 50% glycerol pH 7.3.

Aliquoting is unnecessary for -20°C storage

For technical support and original validation data for this product please contact:

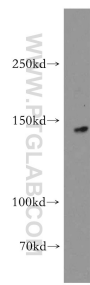
T: 4006900926

E: [Proteintech-CN@ptglab.com](mailto:Proteintech-CN@ptglab.com)

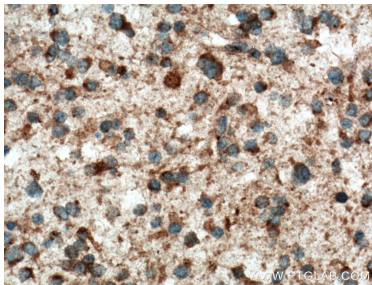
W: [ptgcn.com](http://ptgcn.com)

This product is exclusively available under Proteintech Group brand and is not available to purchase from any other manufacturer.

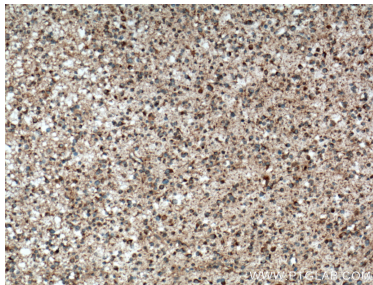
Selected Validation Data



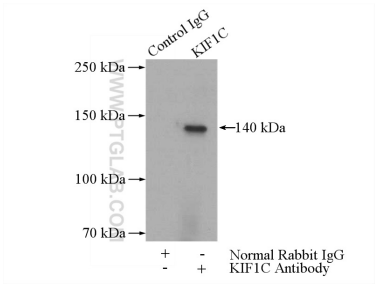
mouse heart tissue were subjected to SDS PAGE followed by western blot with 12760-1-AP (KIF1C antibody) at dilution of 1:500 incubated at room temperature for 1.5 hours.



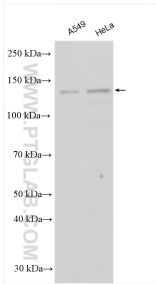
Immunohistochemical analysis of paraffin-embedded human gliomas tissue slide using 12760-1-AP (KIF1C antibody) at dilution of 1:200 (under 40x lens. Heat mediated antigen retrieval with Tris-EDTA buffer (pH 9.0).



Immunohistochemical analysis of paraffin-embedded human gliomas tissue slide using 12760-1-AP (KIF1C antibody) at dilution of 1:200 (under 10x lens. Heat mediated antigen retrieval with Tris-EDTA buffer (pH 9.0).



IP result of anti-KIF1C (IP:12760-1-AP, 5ug; Detection:12760-1-AP 1:300) with mouse heart tissue lysate 4000ug.



Various lysates were subjected to SDS PAGE followed by western blot with 12760-1-AP (KIF1C antibody) at dilution of 1:1000 incubated at room temperature for 1.5 hours.