

For Research Use Only

DPP8 Polyclonal antibody

Catalog Number: 12752-1-AP



Basic Information

Catalog Number:

12752-1-AP

Size:

700 µg/ml

Source:

Rabbit

Isotype:

IgG

Immunogen Catalog Number:

AG3262

GenBank Accession Number:

BC030688

GeneID (NCBI):

54878

UNIPROT ID:

Q6V1X1

Full Name:

dipeptidyl-peptidase 8

Calculated MW:

847 aa, 97 kDa

Observed MW:

75-83 kDa

Purification Method:

Antigen affinity purification

Recommended Dilutions:

WB 1:500-1:1000

IP 0.5-4.0 µg for 1.0-3.0 mg of total protein lysate

IHC 1:20-1:200

Applications

Tested Applications:

IHC, IP, WB, ELISA

Species Specificity:

human, mouse, rat

Note-IHC: suggested antigen retrieval with TE buffer pH 9.0; (*) Alternatively, antigen retrieval may be performed with citrate buffer pH 6.0

Positive Controls:

WB : human placenta tissue, mouse testis tissue

IP : mouse testis tissue,

IHC : human prostate cancer tissue,

Background Information

Storage

Storage:

Store at -20°C. Stable for one year after shipment.

Storage Buffer:

PBS with 0.02% sodium azide and 50% glycerol pH 7.3.

Aliquoting is unnecessary for -20°C storage

For technical support and original validation data for this product please contact:

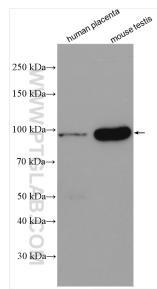
T: 4006900926

E: Proteintech-CN@ptglab.com

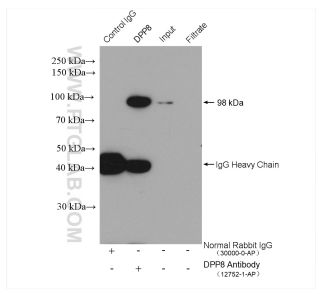
W: ptgcn.com

This product is exclusively available under Proteintech Group brand and is not available to purchase from any other manufacturer.

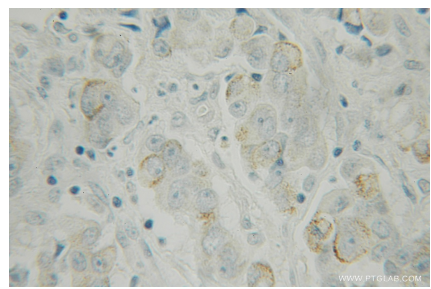
Selected Validation Data



Various lysates were subjected to SDS PAGE followed by western blot with 12752-1-AP (DPP8 antibody) at dilution of 1:500 incubated at room temperature for 1.5 hours.



IP result of anti-DPP8 (IP:12752-1-AP, 4ug; Detection:12752-1-AP 1:500) with mouse testis tissue lysate 4000 ug.



Immunohistochemical analysis of paraffin-embedded human prostate cancer using 12752-1-AP (DPP8 antibody) at dilution of 1:100 (under 10x lens).