

For Research Use Only

PPP2R2C Polyclonal antibody

Catalog Number: 12747-1-AP **4 Publications**



Basic Information

Catalog Number:

12747-1-AP

Size:

500 µg/ml

Source:

Rabbit

Isotype:

IgG

Immunogen Catalog Number:

AG3470

GenBank Accession Number:

BC032954

GeneID (NCBI):

5522

UNIPROT ID:

Q9Y2T4

Full Name:

protein phosphatase 2 (formerly 2A),
regulatory subunit B, gamma isoform

Calculated MW:

430 aa, 49 kDa

Observed MW:

49 kDa

Purification Method:

Antigen affinity purification

Recommended Dilutions:

WB 1:500-1:2000

IHC 1:20-1:200

Applications

Tested Applications:

FC, IHC, WB, ELISA

Cited Applications:

WB

Species Specificity:

human, mouse, rat

Cited Species:

human, mouse

Note-IHC: suggested antigen retrieval with TE buffer pH 9.0; (*) Alternatively, antigen retrieval may be performed with citrate buffer pH 6.0

Positive Controls:

WB: HeLa cells, MCF-7 cells, mouse testis tissue

IHC: human breast cancer tissue, human brain tissue, human testis tissue

Background Information

Notable Publications

Author	Pubmed ID	Journal	Application
Liping Chen	25236601	J Cell Sci	
Shunta Ikeda	32663263	J Biochem	WB
He-Zhou Huang	38011644	Protein Cell	WB

Storage

Storage:

Store at -20°C. Stable for one year after shipment.

Storage Buffer:

PBS with 0.02% sodium azide and 50% glycerol pH 7.3.

Aliquoting is unnecessary for -20°C storage

For technical support and original validation data for this product please contact:

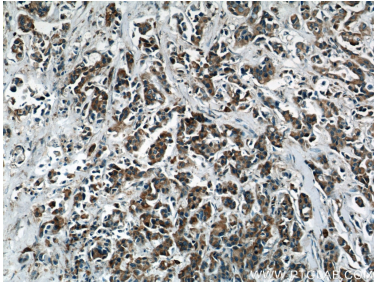
T: 4006900926

E: Proteintech-CN@ptglab.com

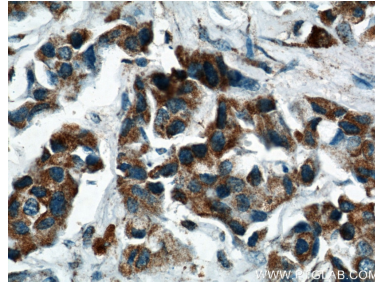
W: ptgcn.com

This product is exclusively available under Proteintech Group brand and is not available to purchase from any other manufacturer.

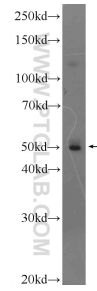
Selected Validation Data



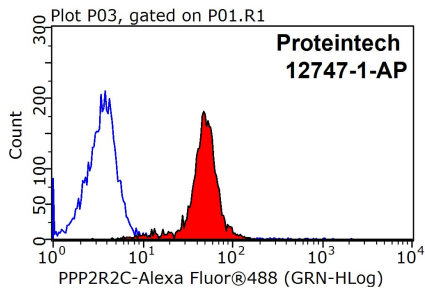
Immunohistochemical analysis of paraffin-embedded human breast cancer using 12747-1-AP (PPP2R2C antibody) at dilution of 1:50 (under 10x lens).



Immunohistochemical analysis of paraffin-embedded human breast cancer using 12747-1-AP (PPP2R2C antibody) at dilution of 1:50 (under 40x lens).



HeLa cells were subjected to SDS PAGE followed by western blot with 12747-1-AP (PPP2R2C Antibody) at dilution of 1:1000 incubated at room temperature for 1.5 hours.



1X10⁶ MCF-7 cells were stained with 0.2ug PPP2R2C antibody (12747-1-AP, red) and control antibody (blue). Fixed with 90% MeOH blocked with 3% BSA (30 min). Alexa Fluor 488-conjugated AffiniPure Goat Anti-Rabbit IgG(H+L) with dilution 1:1500.