

For Research Use Only

Collagen Type XXV Polyclonal antibody, PBS Only

Catalog Number: 12738-1-PBS



Basic Information

Catalog Number: 12738-1-PBS	GenBank Accession Number: BC036669	Purification Method: Antigen affinity purification
Source: Rabbit	GeneID (NCBI): 84570	
Isotype: IgG	UNIPROT ID: Q9BXSO	
Immunogen Catalog Number: AG3634	Full Name: collagen, type XXV, alpha 1	
	Calculated MW: 65 kDa	
	Observed MW: 55 kDa	

Applications

Tested Applications:
WB, IF/ICC, Indirect ELISA

Species Specificity:
human, mouse, rat

Background Information

Collagen alpha-1(XXV) chain is a protein that in humans is encoded by the COL25A1 gene. COL25A1 is a brain-specific membrane-bound collagen. Proteolytic processing releases CLAC, a soluble form of COL25A1 containing the extracellular collagen domains that associates with senile plaques in Alzheimer disease brains.(PMID: 11927537)

Storage

Storage:
Store at -80°C.
The product is shipped with ice packs. Upon receipt, store it immediately at -80°C

Storage Buffer:
PBS only, pH7.3

For technical support and original validation data for this product please contact:

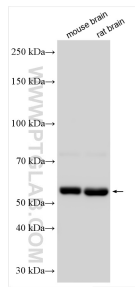
T: 4006900926

E: Proteintech-CN@ptglab.com

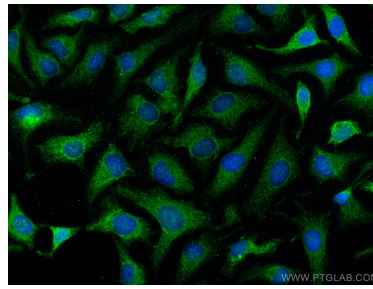
W: ptgcn.com

This product is exclusively available under Proteintech Group brand and is not available to purchase from any other manufacturer.

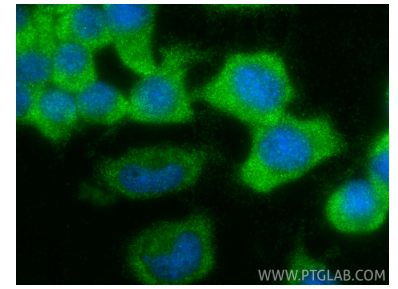
Selected Validation Data



Various lysates were subjected to SDS PAGE followed by western blot with 12738-1-AP (Collagen Type XXV antibody) at dilution of 1:500 incubated at room temperature for 1.5 hours. This data was developed using the same antibody clone with 12738-1-PBS in a different storage buffer formulation.



Immunofluorescent analysis of (4% PFA) fixed HeLa cells using Collagen Type XXV antibody (12738-1-AP) at dilution of 1:200 and CoraLite®488-Conjugated AffiniPure Goat Anti-Rabbit IgG(H+L). This data was developed using the same antibody clone with 12738-1-PBS in a different storage buffer formulation.



Immunofluorescent analysis of (-20°C Ethanol) fixed Neuro-2a cells using Collagen Type XXV antibody (12738-1-AP) at dilution of 1:400 and CoraLite®488-Conjugated Goat Anti-Rabbit IgG(H+L) (SA00013-2). This data was developed using the same antibody clone with 12738-1-PBS in a different storage buffer formulation.