

For Research Use Only

Collagen Type XXV Polyclonal antibody

Catalog Number:12738-1-AP



Basic Information

Catalog Number:

12738-1-AP

Concentration:

450 ug/ml

Source:

Rabbit

Isotype:

IgG

Immunogen Catalog Number:

AG3634

GenBank Accession Number:

BC036669

GeneID (NCBI):

84570

UNIPROT ID:

Q9BXSO

Full Name:

collagen, type XXV, alpha 1

Calculated MW:

65 kDa

Observed MW:

55 kDa

Purification Method:

Antigen affinity purification

Recommended Dilutions:

WB 1:500-1:1000

IF/ICC 1:50-1:500

Applications

Tested Applications:

WB, IF/ICC, ELISA

Species Specificity:

human, mouse, rat

Positive Controls:

WB : mouse brain tissue, rat brain tissue

IF/ICC : HeLa cells,

Background Information

Collagen alpha-1(XXV) chain is a protein that in humans is encoded by the COL25A1 gene. COL25A1 is a brain-specific membrane-bound collagen. Proteolytic processing releases CLAC, a soluble form of COL25A1 containing the extracellular collagen domains that associates with senile plaques in Alzheimer disease brains.(PMID: 11927537)

Storage

Storage:

Store at -20°C. Stable for one year after shipment.

Storage Buffer:

PBS with 0.02% sodium azide and 50% glycerol, pH7.3

Aliquoting is unnecessary for -20°C storage

For technical support and original validation data for this product please contact:

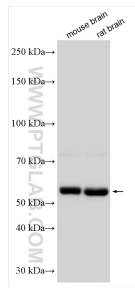
T: 4006900926

E: Proteintech-CN@ptglab.com

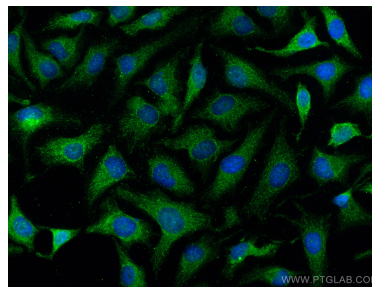
W: ptgcn.com

This product is exclusively available under Proteintech Group brand and is not available to purchase from any other manufacturer.

Selected Validation Data



Various lysates were subjected to SDS PAGE followed by western blot with 12738-1-AP (Collagen Type XXV antibody) at dilution of 1:500 incubated at room temperature for 1.5 hours.



Immunofluorescent analysis of (4% PFA) fixed HeLa cells using Collagen Type XXV antibody (12738-1-AP) at dilution of 1:200 and CoraLite®488-Conjugated AffiniPure Goat Anti-Rabbit IgG(H+L).