

For Research Use Only

# GRPEL1 Polyclonal antibody

Catalog Number: 12720-1-AP

3 Publications



## Basic Information

Catalog Number:

12720-1-AP

Size:

500 ug/ml

Source:

Rabbit

Isotype:

IgG

Immunogen Catalog Number:

AG3415

GenBank Accession Number:

BC024242

GeneID (NCBI):

80273

UNIPROT ID:

Q9HAV7

Full Name:

GrpE-like 1, mitochondrial (E. coli)

Calculated MW:

217 aa, 24 kDa

Observed MW:

24 kDa

Purification Method:

Antigen affinity purification

Recommended Dilutions:

WB 1:5000-1:50000

IP 0.5-4.0 ug for 1.0-3.0 mg of total protein lysate

IF/ICC 1:200-1:800

## Applications

Tested Applications:

WB, IF/ICC, IP, ELISA

Cited Applications:

WB

Species Specificity:

human, mouse, rat

Cited Species:

human

Positive Controls:

WB : MCF-7 cells, HEK-293T cells

IP : MCF-7 cells,

IF/ICC : HepG2 cells,

## Background Information

### Notable Publications

Author	Pubmed ID	Journal	Application
Jonas Benjamin Michaelis	36056001	Nat Commun	WB
Pingbo Chen	31636012	EBioMedicine	WB
Chun-Shik Shin	33431889	Nat Commun	WB

## Storage

Storage:

Store at -20°C. Stable for one year after shipment.

Storage Buffer:

PBS with 0.02% sodium azide and 50% glycerol pH 7.3.

Aliquoting is unnecessary for -20°C storage

For technical support and original validation data for this product please contact:

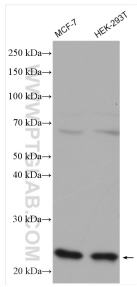
T: 4006900926

E: [Proteintech-CN@ptglab.com](mailto:Proteintech-CN@ptglab.com)

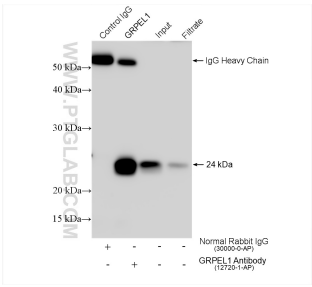
W: [ptgcn.com](http://ptgcn.com)

This product is exclusively available under Proteintech Group brand and is not available to purchase from any other manufacturer.

Selected Validation Data



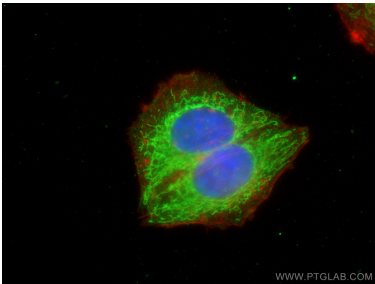
Various lysates were subjected to SDS PAGE followed by western blot with 12720-1-AP (GRPEL1 antibody) at dilution of 1:12000 incubated at room temperature for 1.5 hours.



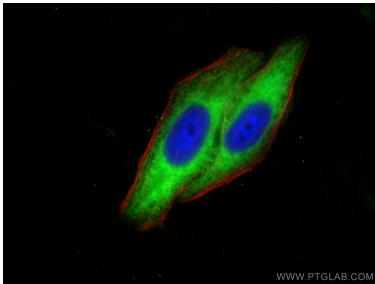
IP result of anti-GRPEL1 (IP:12720-1-AP, 4ug; Detection:12720-1-AP 1:10000) with MCF-7 cells lysate 1000 ug.

Immunohistochemical analysis of paraffin-embedded human bowen disease slide using 12720-1-AP (GRPEL1 antibody) at dilution of 1:2400 (under 20x lens). Heat mediated antigen retrieval with Tris-EDTA buffer (pH 9.0).

Immunohistochemical analysis of paraffin-embedded human bowen disease slide using 12720-1-AP (GRPEL1 antibody) at dilution of 1:2400 (under 20x lens). Heat mediated antigen retrieval with Tris-EDTA buffer (pH 9.0).



Immunofluorescent analysis of (4% PFA) fixed HepG2 cells using GRPEL1 antibody (12720-1-AP) at dilution of 1:400 and CoraLite®488-Conjugated AffiniPure Goat Anti-Rabbit IgG(H+L), CL594-phalloidin (red).



Immunofluorescent analysis of (-20°C Ethanol) fixed HepG2 cells using GRPEL1 antibody (12720-1-AP) at dilution of 1:400 and CoraLite®488-Conjugated AffiniPure Goat Anti-Rabbit IgG(H+L), CL594-phalloidin (red).